



CLEMCO
The Performance
System

TECHNICAL DATA SHEET

Note: For safe, efficient blasting, read and follow the owner's manual and seek training for everyone who will use this equipment.

Purpose

The Apollo 600 LP is designed for use with an ambient air pump. It meets OSHA standards for respiratory protection and air noise limitations. The Apollo 600's full-helmet design protects the blast operator's head from rebounding abrasive and from job-site impact hazards.

The heavy-duty silver-grey cape protects the operator's neck, shoulders, and chest from rebounding abrasive.

Requirements for Operation

The following items are required or recommended for operation, but may not be included with this respirator:

- An ambient air pump capable of delivering 7 to 15 cfm of air at 8 to 12 psi
- Output from the ambient air pump must meet the standard for Grade D breathing air, as defined by the Compressed Gas Association, Commodity Specification: G-7.1 (www.cganet.com)
- Approved 1/2-inch ID x 50 or 100 feet long respirator hose from the ambient air pump to the helmet connection
- Protective clothing, gloves, and shoes suitable for a heavy construction site
- Primary hearing and eye protection

Description of Operation

The Apollo 600 is a single-shell helmet with two adjustable suspension options. The DLX comfort-fit suspension (2 sizes) surrounds the operators head with comfortable padding. The adjustable web suspension fits head sizes 6.5 to 8. Adjustable chin strap holds the helmet in position on the operator's head.

The wide, full-view window provides an expansive field of vision. A series of lenses preserves the operator's clear view of the work surface and protects the operator from dust and abrasive in the

Description

The Apollo 600 LP is a type CE, continuous-flow, supplied-air respirator as defined by the National Institute for Occupational Safety and Health (NIOSH) for abrasive blasting to be used with an ambient air pump. The Apollo 600 is high-visibility red and offered with two suspension options.



surrounding air. A replaceable fixed inner lens securely fits inside a molded rubber gasket. An intermediate lens protects the inner lens; and up to 3 tear-away (perforated) outer lenses complete the system. The tear-away lenses are removed one at a time to expose a clean lens beneath. The multi-lens system is held in place by a hinged frame with replaceable latch.

The Apollo 600 LP comes with a Constant-Flow Connector (CFC) that provides a fixed flow of air. It is engineered for flow settings as specified by NIOSH.

A flexible breathing tube maintains air flow between the inlet fitting on the operator's belt and a replaceable inlet fitting at the center rear of the helmet crown for maximum operator comfort and maneuverability. The tube contains specially-formulated sound-deadening materials to reduce noise levels of incoming air to 80 dBA.

The helmet is generously sized to allow ear plugs or ear muffs and safety glasses or goggles as needed.

Incoming air enters the system through the air control device on the operator's belt. It continues through the breathing-air tube to enter the helmet at the inlet fitting at the center rear of the helmet crown. An air-distribution channel guides air over the head to the operator's face.

Apollo 600 LP Supplied-Air Respirators for use with ambient-air pump

Advantages

- Two suspension options: web-style or DLX comfort-fit style
- Expansive, 180° full-view window
- Multi-lens system with rugged, positive-latching window frame
- Built-in mini visor prevents media ingress between lenses
- User-friendly cape attachment system
- Zip-in-and-out washable inner collar
- Replaceable inlet fitting
- Replaceable window latch
- Generous interior dimension allows supplementary hearing and eye protection
- Optional rectangular lens

Approvals and Certifications

The Apollo 600 LP helmet is a NIOSH-approved type CE respirator (approval number TC# 19C - 358) and is recognized by OSHA as having an assigned protection factor (APF) for lead dust of 1000 times the permissible exposure limit (PEL) for lead dust. It also meets the American National Standards Institute (ANSI) requirement for industrial head protection as stated in ANSI 289.1-2003 as a Type I, Class G protective helmet.

NOTE: Prior to use, ensure that the Apollo, type CE, supplied-air respirator is appropriate for your specific blasting conditions and requirements.

Respirator Systems and Accessories

Description	Stock No.	
	DLX Suspension	Web Suspension
Apollo 600 LP, less respirator hose, with constant flow connector	25195	24010
Apollo 600 LP, with 50 ft. respirator hose, and constant flow connector	25210	24011

Options and Accessories

Heavy-duty blast suit (leather front, cotton back)					
S	M	L	XL	XXL	XXXL
08920	08921	08922	08923	24201	24202
Light-weight seasonal blast suit (nylon front, cotton back)					
S	M	L	XL	XXL	XXXL
22913	22914	22915	22916	22917	25022
Leather gloves	02243				
Comfort Vest with Clem-Cool	25266				
High pressure conversion kit					
Converts LP helmet to HP helmet	24811				
Noise reduction ear muffs	23886				
Clemco Do-rag	23814				
Ambient Air Pump,					
Single-operator, CAP-1	22383				
Four-operator, Stationary, CAP-4	22530				
Four-operator, Portable, CAP-4C	22384				
Rectangular outer lens, .015", non-perf., (pk of 25)	24005				

Related Clemco Literature

Description	Stock No.
Contractor Series Catalog	21385
Abrasive Blasting Safety Practices	22090
Blast Off 2	09294
Safety Equipment Product Study	07764

Shipping Dimensions and Weights

Respirator

Stock No.	Dimensions	Weight
24010	14-1/2" x 13" x 15"	7.5 lb
24011	14-1/2" x 13" x 15"	18.5 lb

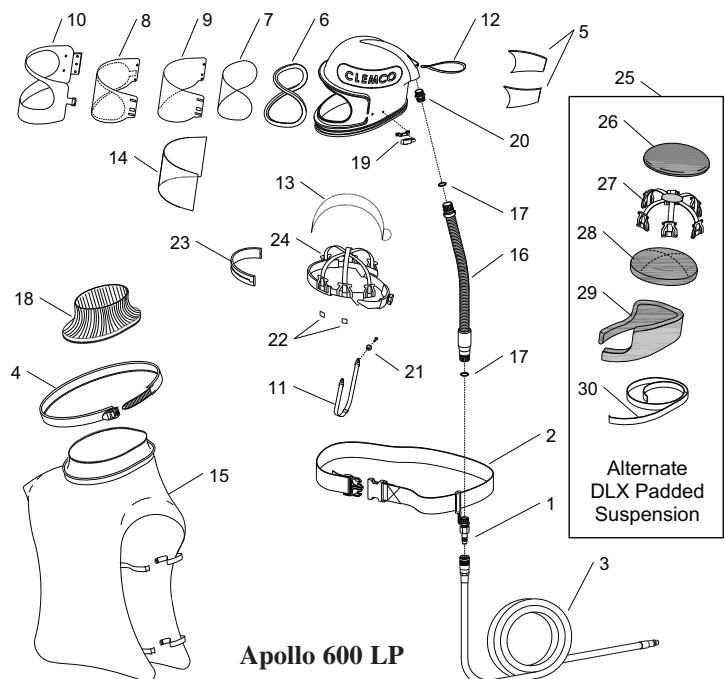
Respirator Hose (in separate poly bag)

Stock No.	Dimensions	Weight
22510	1/2" x 50 ft. (18" x 18" x 4")	11 lb
21413	1/2" x 100 ft. (18" x 18" x 6")	22 lb

Authorized Distributor:

Replacement Parts

Item	Description	Stock No.
1.	Constant-flow connector, LP w/o belt	21429
2.	Belt, 2" web with buckle	04430
3.	Respirator hose,	
	1/2" x 50-foot (alternate)	22510
	1/2" x 100-foot (alternate)	21413
4.	Cape attachment band	23801
5.	Acoustical foam kit, both sides	
	not used with padded suspension	04369
6.	Gasket, window	23819
7.	Inner lens, .040", package of 5	04367
8.	Outer lens, .0075", perf'ed, pack of 25	04361
9.	Intermediate lens, .020",	
	package of 5	24943
	package of 25	04373
10.	Window frame assembly	24012
11.	Chin strap	04460
12.	Handle strap	03623
13.	Partition, air baffle	23811
14.	Outer lens, .015", rectangular, pkg. of 25	24005
15.	Cape, black with inner collar	23818
16.	Breathing tube assembly w/ (2) item 17	22811
17.	O-ring, 7/8" OD, 2 required	22815
18.	Inner collar, cape	08740
19.	Latch kit, window frame	
	includes base, screws and nuts	24006
20.	Inlet fitting	23804
21.	Chin strap holder kit (2 w/ fasteners)	24008
22.	Clips, suspension (pack of 4)	24773
23.	Sweatband, used with item 24	23817
24.	Web suspension with sweatband (alternate)	23802
25.	DLX padded suspension kit (alternate)	
	includes items 13 and 26 thru 30	25189
26.	Pad, top	25181
27.	Suspension web	25184
28.	Pad, middle	25182
29.	Pad, side	
	black/grey fits most head sizes	25183
	black/blue for smaller head sizes	25187
30.	Hook-fastener tape, 1" adhesive backed,	
	3-ft. used, specify feet required	25185
	Apollo 600 LP Owner's Manual	23929



ISO 9001:2000 certified. Clemco is committed to continuous product improvement. Specifications are subject to change without notice.

© 2009 Clemco Industries Corp. • One Cable Car Drive • Washington, MO 63090 • Phone (636) 239-4300 • Fax (800) 726-7559

Stock No. 24183

www.clemcoindustries.com

Job No. 1195-1295 • Rev. C 04/09