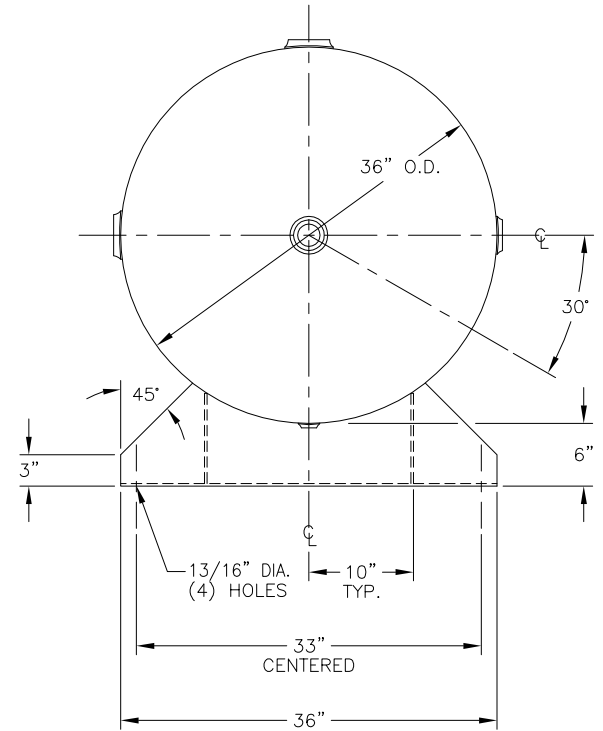
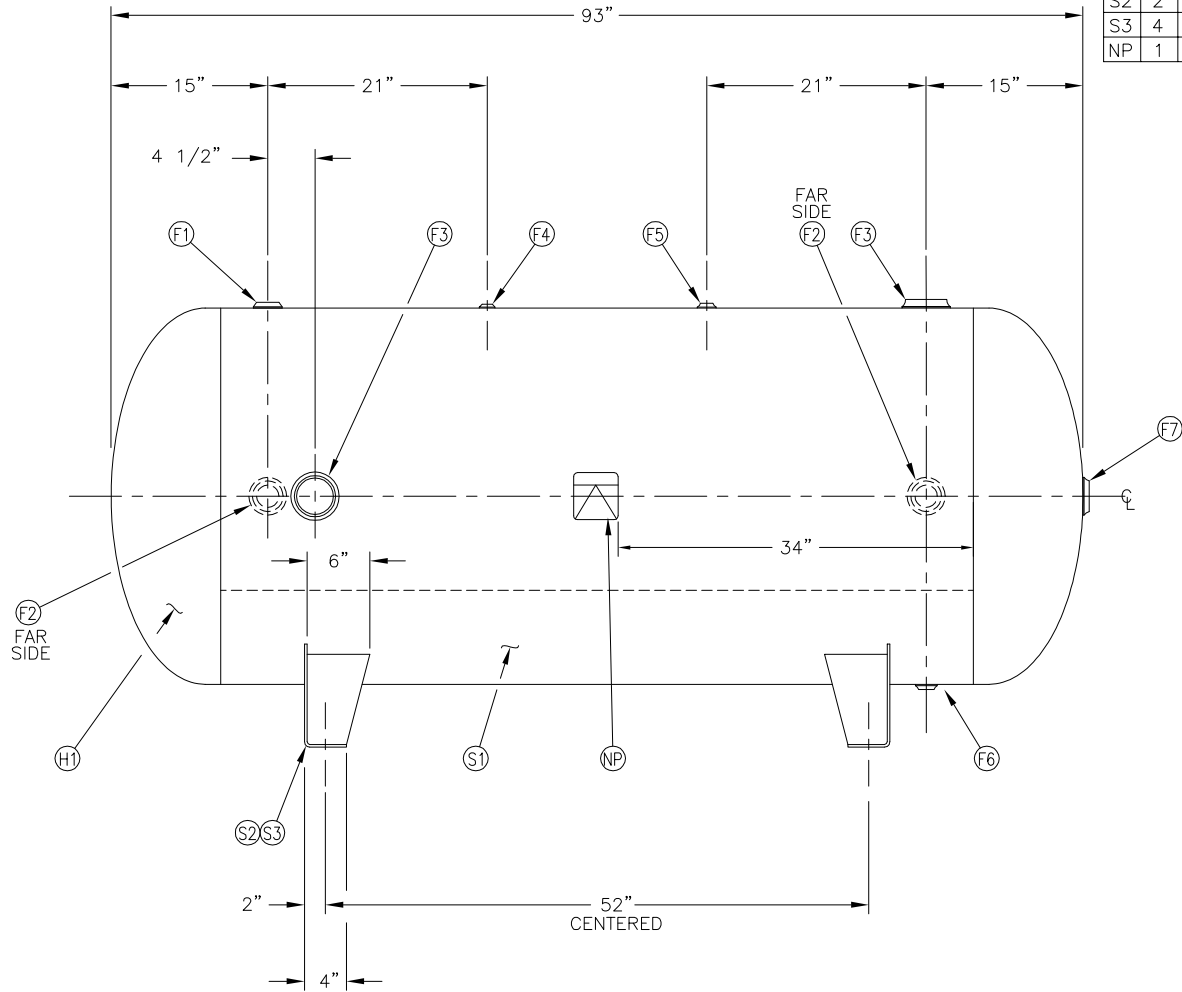



NO.	QTY.	DESCRIPTION	SPEC	SUB-DWG.
S1	1			
H1	2			
F1	1	1 1/2 NPT 1500# RADIAL FLANGE	SA-181-70	
F2	2	2 NPT 1500# RADIAL FLANGE	SA-181-70	
F3	2	3 NPT 1500# RADIAL FLANGE	SA-181-70	
F4	1	1/4 NPT 1500# FLAT FLANGE	SA-181-70	
F5	1	1/2 NPT 1500# FLAT FLANGE	SA-181-70	
F6	1	3/4 NPT 1500# RADIAL FLANGE	SA-181-70	
F7	1	2 NPT 1500# FLAT FLANGE	SA-181-70	
S2	2	1/4" X 13 1/2" X 36" SADDLE	C1008	
S3	4	3/16" X 6" X 8 5/8" GUSSET	C1010	
NP	1	ASME DATA PLATE	C1010	



SYM	DATE	BY	REVISION	APP	XREF	REV.	NOTES	SPECIFICATIONS		
								O.D. 36 LGTH. 93 MAWP 200 PSI @ 450 °F GAL. 400 WT. 925# CRN L8908.SC WELD DETAILS: M-1932 STD. TOLERANCES (UNLESS OTHERWISE NOTED): M-2461	Q:\3000 36" X 93" STANDARD AIR RECEIVER	
								CODE ASME SECT. VIII, DIV.1 PER DATE OF DWG/LAST REV	DRAWN BY APP. BY	DATE DATE
									SCALE: NONE DRAWING NO. 302488	