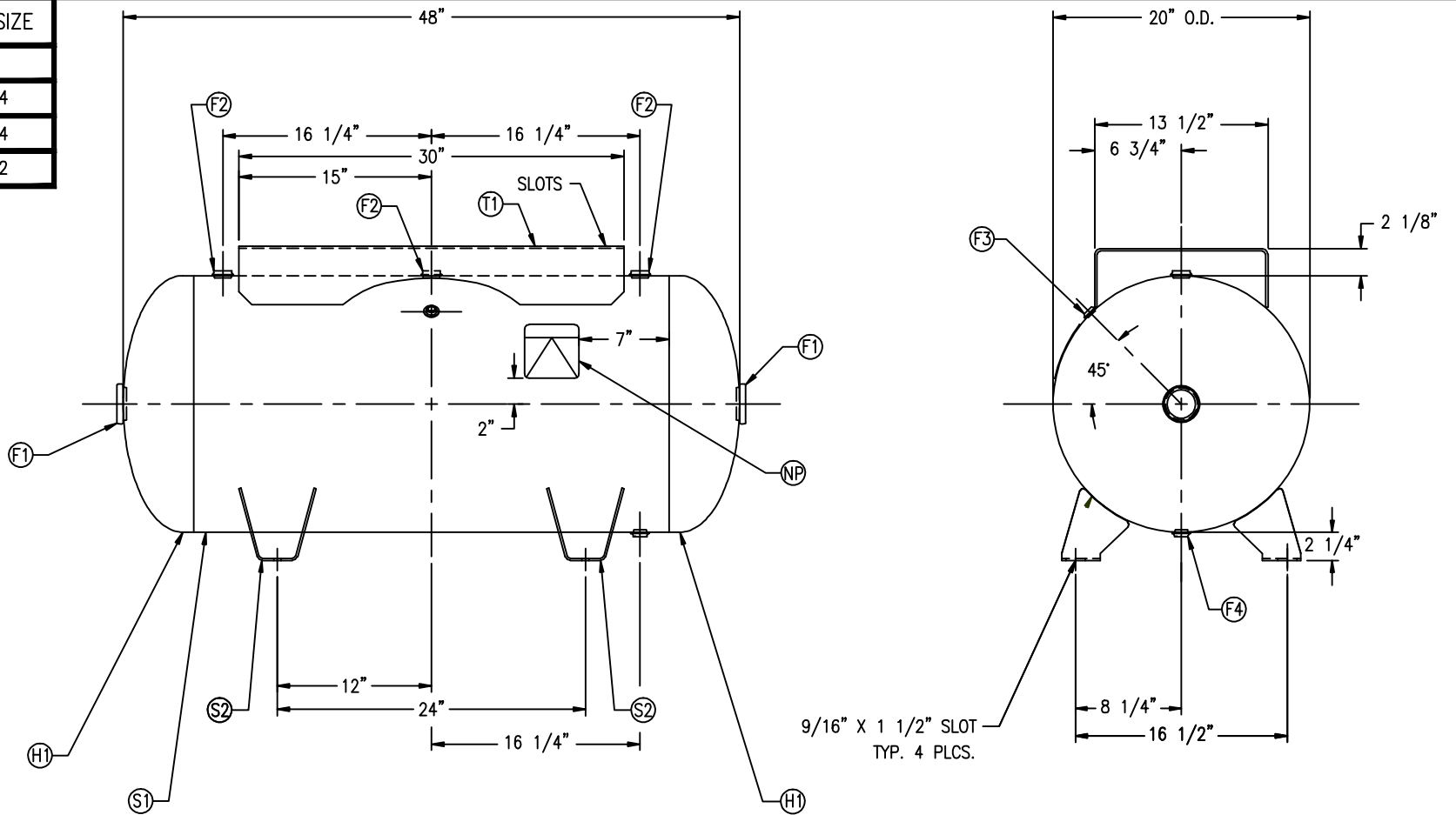



FIND NO.	NPT SIZE
F1	2
F2	3/4
F3	1/4
F4	1/2



9/16" X 1 1/2" SLOT
TYP. 4 PLCS.

SYM	DATE	BY	REVISION	APP	XREF	REV.	NOTES	SPECIFICATIONS	
						C957 A		O.D. 20	LGTH. 48
								MAWP 300	PSI @ 650 °F
								CRN F1164.1C	CODE ASME UW-12(c)
								WELD DETAILS: M-1932	PER DATE OF DWG/LAST REV
								STD. TOLERANCES (UNLESS OTHERWISE NOTED): M-2461	
								 MANCHESTER TANK	
								\\CORP2\DWG\302	
								HORIZONTAL AIR RECEIVER	
			DRAWN BY		DATE		SCALE: NONE		
			APP. BY		DATE		DRAWING NO. 302475		