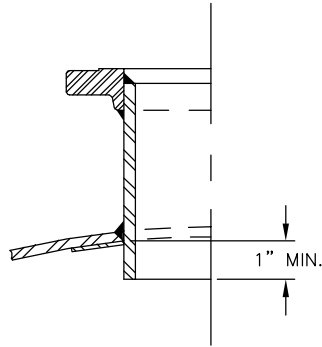
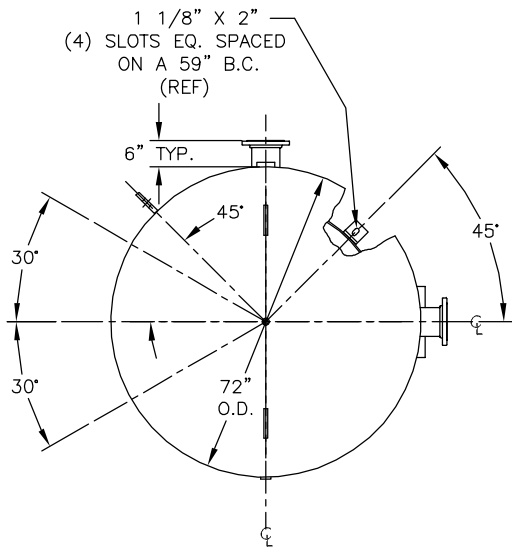


MANWAY DETAIL

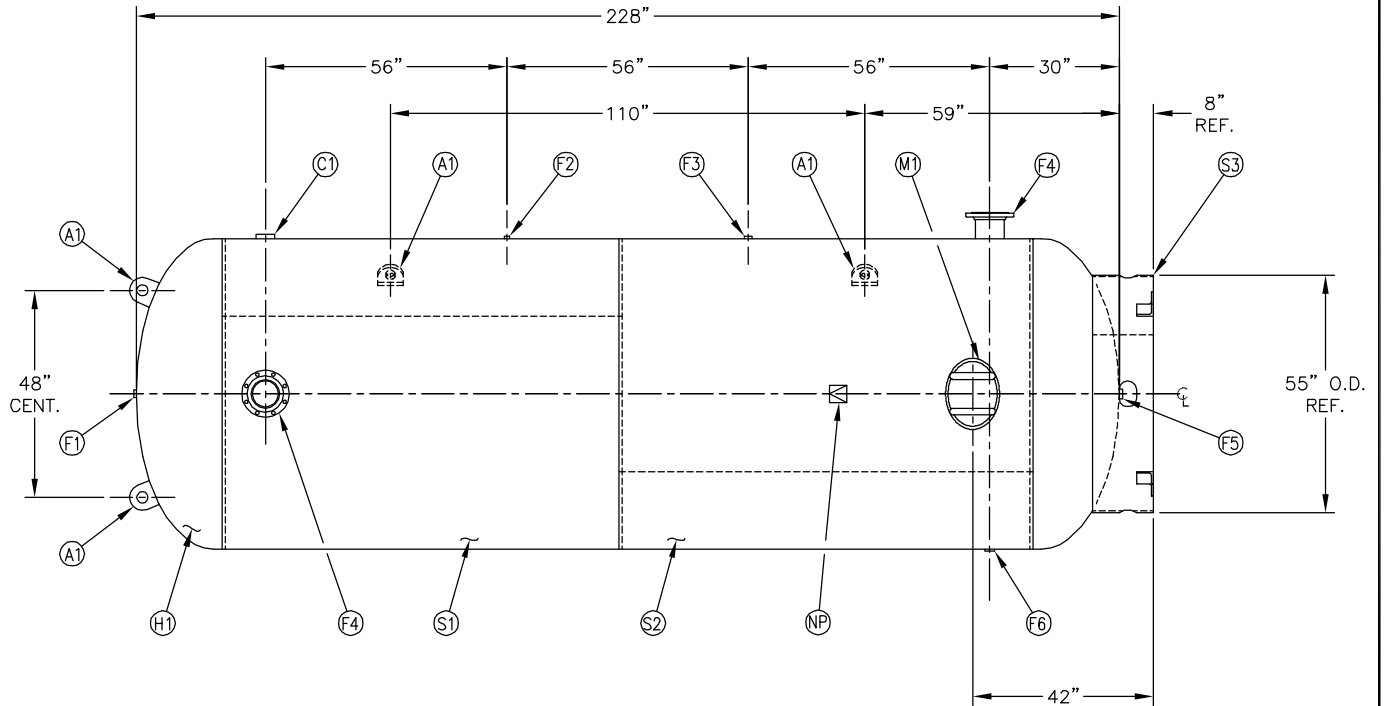


NOZZLE DETAIL

NO.	QTY.	DESCRIPTION	SPEC	SUB-DWG.
S1	1			
S2	1			
H1	2			
C1	1	3"-NPT 3000# HALF COUPLING	SA-105	
F1	1	1"-NPT 1500# FLAT FLANGE	SA-181-70	
F2	1	1/4"-NPT 1500# FLAT FLANGE	SA-181-70	
F3	1	1"-NPT 1500# RADIAL FLANGE	SA-181-70	
F4	2	6" 150# ANSI RF.SO. FLANGE	SA-105	
F4	2	6" SCH. 80 PIPE X 7 1/2" LONG	SA-106-B	
F4	2	.134 X 8 5/8" O.D. X 6 5/8" I.D. BACKING RING	C1008	
F5	1	1 1/4" NPT 1500# FLAT FLANGE	SA-181-70	
F6	1	1 1/4" NPT 1500# RADIAL FLANGE	SA-181-70	
M1	1	12" X 16" X 3/4" X 4" 300# MANWAY	SA-675-70	
A1	4	1" X 6" X 6" STANDARD LIFT LUG		A86004
S3	1	STANDARD 8" SKIRT & CLIP ASSY. FOR 72" DIA. TANK		A86003
NP	1	ASME DATA PLATE	C1010	



ENG. _____ DATE _____
 Q.C. _____ DATE _____



SYM	DATE	BY	REVISION	APP	XREF	REV.	NOTES	SPECIFICATIONS	MANCHESTER TANK Q:\3000	
A		BAK		AMA				O.D. 72 LGTH. 228 SH. MAWP 165 PSI @ 400 °F HD. RT- MDMT -20 °F @ 165 PSI GAL 3800 SA. 301.59 EXMT TEST PSI WT. 6800 CU.FT. 499.00 XRAY CORR ALW SH HD CRN T1800.264 CODE ASME SECT. VIII, DIV.1 PER DATE OF DWG/LAST REV	72" X 228" VERTICAL STANDARD AIR RECEIVER DRAWN BY: <i>B. Skinner</i> DATE: _____ SCALE: NONE APP. BY: <i>J. Reed</i> DATE: _____ DRAWING NO.: 302457	
WELD DETAILS: M-1932 STD. TOLERANCES (UNLESS OTHERWISE NOTED): M-2461										