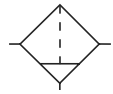


Coalescing Filter

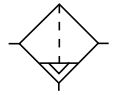
M03

 = "Most Popular"

B



Manual Drain



Auto Drain



M03-02-000

Features

- Removes Liquid Aerosols and Sub-micron Particles
- Liquids Gravitate to the Bottom of the Element and Will Not Re-enter the Airstream
- Oil Free Air for Critical Applications, such as Air Gauging and Pneumatic Instrumentation and Controls

Specifications

Flow Capacity*	1/8	17.0 SCFM (8 dm ³ /s)
	1/4	20.0 SCFM (9 dm ³ /s)
Maximum Supply Pressure		
Polycarbonate Bowl	0 to 150 PSIG (0 to 10.3 bar)	
Metal Bowl	0 to 250 PSIG (0 to 17.2 bar)	
Piston Drain	10 to 250 PSIG (0.7 to 17.2 bar)	
Operating Temperature		
Polycarbonate Bowl	32°F to 125°F (0°C to 52°C)	
Metal Bowl	32°F to 175°F (0°C to 80°C)	
Piston Drain	32°F to 125°F (6°C to 52°C)	
Port Size	NPT	1/8, 1/4
Standard Filtration	Micron	(B) 1.0, (C) 0.01 (D) 0.003 ppm / wt**
Weight	.41 lb. (.18 kg)	

* Inlet pressure 90 PSIG (6.2 bar). Pressure drop 5 PSID (0.3 bar).

**Filtration temperature of 70°F (21°C) @ 100 PSIG (6.9 bar) with typical compressor lubricating oil and protected by Type C filter.

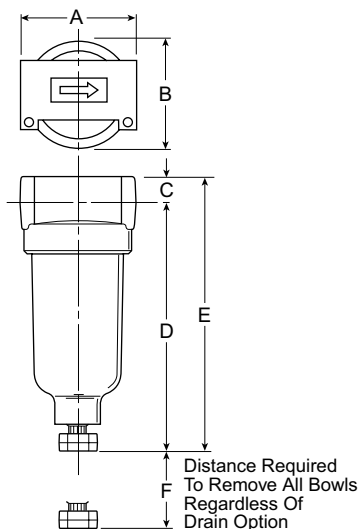
"M" Series Coalescing Filters, with Type "B" 1 micron elements: All Wilkerson Type "M" Oil Removal (Coalescing) Filters with Type "B" 0.5 micron elements **exceed ISO Class 2** for maximum particle size and concentration of solid contaminants, and exceed Class 3 on maximum oil content (ppm/wt).

"M" Series Coalescing Filters, with Type "C" 0.01 micron elements: All Wilkerson Type "M" Oil Removal (Coalescing) Filters with Type "C" 0.01 micron elements **exceed ISO Class 1** for maximum particle size and concentration of solid contaminants, and exceed Class 1 on maximum oil content (ppm/wt).

"M" Series Adsorption Filters, with Type "D" 0.003 micron activated carbon elements: All Wilkerson Type "M" adsorption filters with Type "D" 0.003 micron activated carbon elements **exceed ISO Class 1** on maximum oil content (ppm/wt).

Materials of Construction

Body	Zinc
Bowls – Transparent	Polycarbonate
Metal (Without Sight Gauge)	Zinc
Deflector, Element Holder & Baffle	Plastic
Drains	
Manual Drain –	
Body & Stem	Plastic
Seals	Nitrile
Piston Drain –	
Piston & Seals	Nitrile
Stem, Seat, Adaptor & Washers	Aluminum
Filter Element	Plastic
Seals	Nitrile



Piston Drain

Accepts 1/8" Tubing

Dimensions

Models	Inches (mm)	A	B	C	D	E	F
Standard Unit M03-XX-000		1.69 (43)	1.53 (39)	.39 (10)	3.82 (97)	4.21 (107)	1.60 (41)
Piston Drain M03-XX-D00		1.69 (43)	1.53 (39)	.39 (10)	3.87 (99)	4.26 (108)	1.60 (41)

= "Most Popular"

Replacement Bowl Kits

- Metal Bowl –
- Manual DrainPS451B
- Piston DrainPS447B

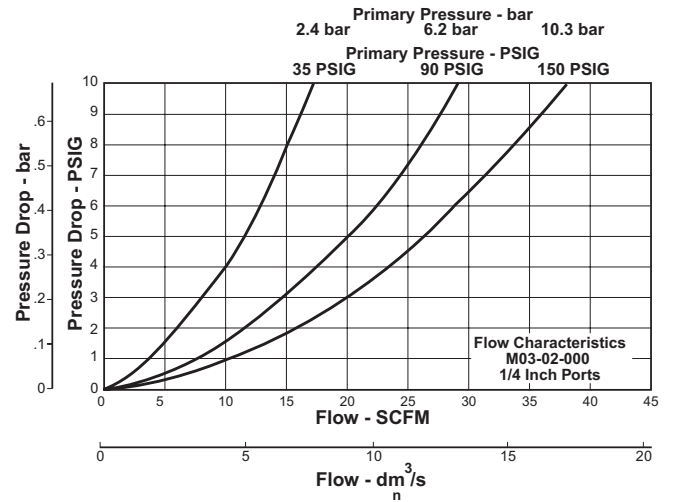
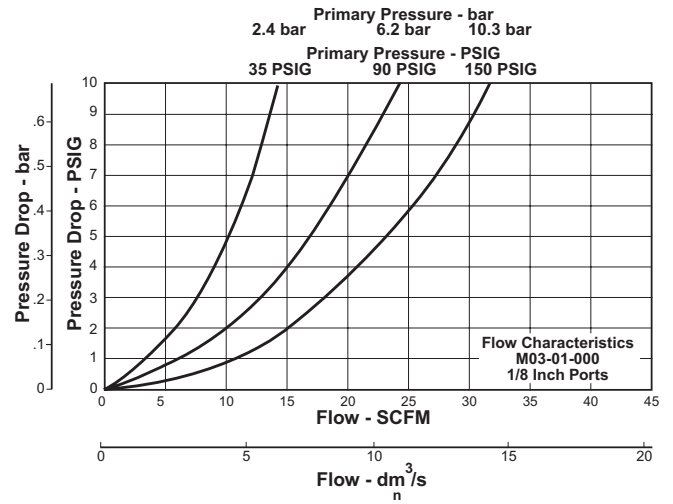
- Plastic Bowl –
- Manual DrainPS404
- Piston DrainPS408B

Replacement Element Kits

- Type "B", 1.0 Micron.....PS456
- Type "C", 0.01 Micron.....PS446
- Type "D", Oil Vapor Removing.....PS452

Accessories

- Mounting Bracket Kit.....PS417B



B

Ordering Information

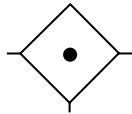
Model Type	Port Size	Polycarbonate Bowl / "C" Element	Metal Bowl / "C" Element	Polycarbonate Bowl / "B" Micron Element	Polycarbonate Bowl / "D" Element
Manual Drain	1/8	M03-01-000	M03-01-M00	M03-01-S00	M03-01-X00
	1/4	M03-02-000	M03-02-M00	M03-02-S00	M03-02-X00

Options - To order an option supplied with the unit model, add the appropriate coded suffix letter in the designated position of the model number.

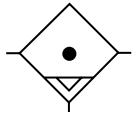
Coalescing Filter M08

= "Most Popular"

B



Coalescing Filter



Auto Drain



M08-02-CK00

Features

- High-efficiency Removal of Water, Oil Aerosols, and Solid Particulate Contaminants Down to 0.01 mg/m³ with Minimum Pressure Drop
- Modern Design and Appearance
- Light Weight
- High Flow Capacity
- Bowl Guard
- Quick-disconnect Bowl

Specifications

Flow Capacity*	1/8, 1/4	11.0 SCFM (5.2 dm ³ /s)
Maximum Supply Pressure	Plastic Bowl	150 PSIG (10.3 bar)
	Metal Bowl	250 PSIG (17.2 bar)
Operating Temperature	Plastic Bowl	32° to 125°F (0° to 52°C)
	Metal Bowl	32° to 150°F (0° to 65.5°C)
Port Size	NPT / BSPP-G 1/4	
Standard Filtration	Micron	(B) .5, (C) 0.01
		(D) 0.003 mg/m ³ **
Weight	.4 lb. (0.2 kg)	

* Inlet pressure 150 PSIG (10.3 bar). Pressure drop 3 PSID (0.2 bar) (dry element).

** Filtration temperature of 70°F (21°C) @ 100 PSIG (6.9 bar) with typical compressor lubricating oil and protected by Type C filter.

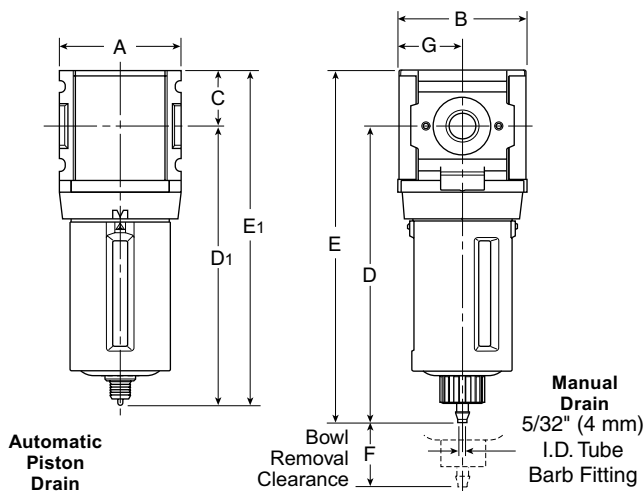
"M" Series Coalescing Filters, with Type "B" 0.5 micron elements: All Wilkerson Type "M" Oil Removal (Coalescing) Filters with Type "B" 0.5 micron elements exceed ISO Class 2 for maximum particle size and concentration of solid contaminants, and exceed Class 3 on maximum oil content (mg/m³).

"M" Series Coalescing Filters, with Type "C" 0.01 micron elements: All Wilkerson Type "M" Oil Removal (Coalescing) Filters with Type "C" 0.01 micron elements exceed ISO Class 1 for maximum particle size and concentration of solid contaminants, and exceed Class 1 on maximum oil content (mg/m³).

"M" Series Adsorption Filters, with Type "D" 0.003 micron activated carbon elements: All Wilkerson Type "M" adsorption filters with Type "D" 0.003 micron activated carbon elements exceed ISO Class 1 on maximum oil content (mg/m³).

Materials of Construction

Body	Zinc	
Body Cap	ABS	
Bowl	Plastic Bowl	Polycarbonate
	Metal Bowl	Zinc
Filter Element	Type "B", "C"	Borosilicate Cloth
	Type "D"	Activated Carbon
Seals	Nitrile	



Dimensions

Models	Inches (mm)	A	B	C	D	D ₁	E	E ₁	F	G
Standard Unit M08-XX-CK00		1.58 (40)	1.68 (43)	.72 (18)	3.86 (98)	—	4.58 (116)	—	1.31 (33)	.84 (21)
Automatic Piston Drain M08-XX-CR00		1.58 (40)	1.68 (43)	.72 (18)	—	3.64 (93)	—	4.36 (111)	1.31 (33)	.84 (21)

 = "Most Popular"

Replacement Bowl Kits

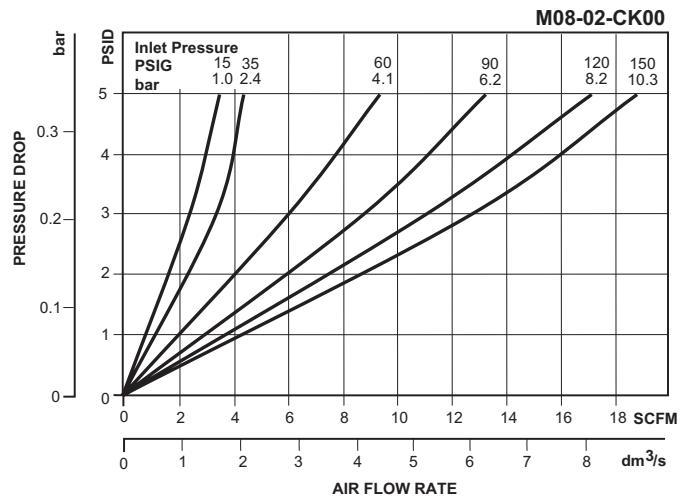
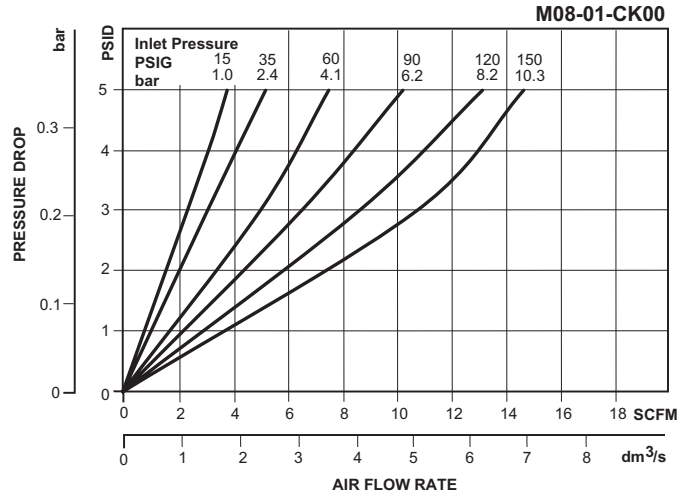
- Metal Bowl, Manual Drain.....GRP-96-714
- Plastic Bowl / Bowl Guard, Manual Drain.....GRP-96-712

Replacement Element Kits

- Type "B", 0.5 Micron..... MSP-96-732
- Type "C", 0.01 Micron..... MTP-96-649
- Type "D", 0.003 Micron, Activated Carbon MXP-96-222

Accessories

- Automatic Piston DrainGRP-96-716
- Wall Mounting Bracket –
- C-Type GPA-97-010
- T-Type GPA-96-737



Ordering Information

Model Type	Port Size	Plastic Bowl / Bowl Guard / C Element	Plastic Bowl / Bowl Guard / B Element	Plastic Bowl / Bowl Guard / D Element	Metal Bowl / C Element	Metal Bowl / B Element	Metal Bowl / D Element
Manual Drain	1/4	M08-02-CK00	M08-02-BK00	M08-02-DK00	M08-02-CL00	M08-02-BL00	M08-02-DL00
Automatic Piston Drain	1/4	M08-02-CR00	M08-02-BR00	M08-02-DR00	M08-02-CS00	M08-02-BS00	M08-02-DS00

Options - To order an option supplied with the unit model, add the appropriate coded suffix letter in the designated position of the model number.

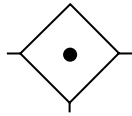
Coalescing Filter

M12

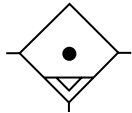
= "Most Popular"



M12-02-CK00



Coalescing Filter



Auto Drain

B

Specifications

High Flow Capacity*		"C" Element	"B" Element
	1/4	30 SCFM	50 SCFM
	3/8	30 SCFM	65 SCFM
Maximum Supply Pressure			
Without DPI	Plastic Bowl	150 PSIG (10.3 bar)	
	Metal Bowl	250 PSIG (17.2 bar)	
With DPI		150 PSIG (10.3 bar)	
	With Piston Drain	150 PSIG (10.3 bar)	
Operating Temperature			
Without DPI	Plastic Bowl	32° to 125°F (0° to 52°C)	
	Metal Bowl	32° to 175°F (0° to 80°C)	
With DPI		32° to 125°F (0° to 52°C)	
	With Piston Drain	32° to 125°F (0° to 52°C)	
Port Size	NPT / BSPP-G		1/4, 3/8
Standard Filtration	Micron	(C) 0.01	(B) 0.7
Weight	1.2 lb. (0.54 kg)		

* Inlet pressure 90 psig (6.2 bar) and 5 psig (0.3 bar) pressure drop.

"M12" Series Coalescing Filters, with Type "B" 0.7 micron elements: Wilkerson Type "M12" Oil Removal (Coalescing) Filters with Type "B" 0.7 micron elements **exceed ISO Class 2** for maximum particle size and concentration of solid contaminants, and exceed Class 3 on maximum oil content (mg/m³).

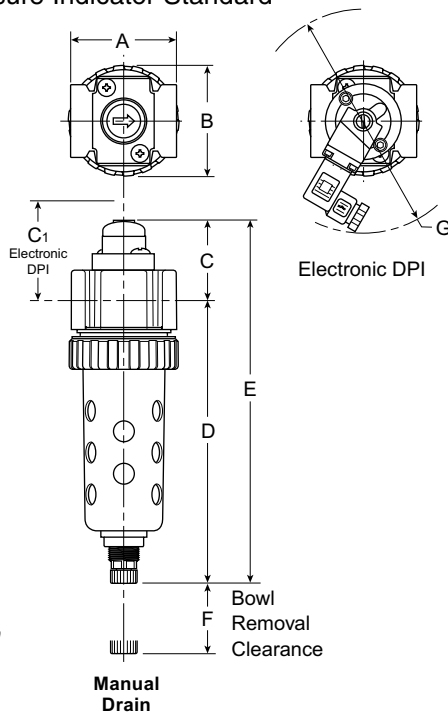
"M" Series Coalescing Filters, with Type "C" 0.01 micron elements: All Wilkerson Type "M" Oil Removal (Coalescing) Filters with Type "C" 0.01 micron elements **exceed ISO Class 1** for maximum particle size and concentration of solid contaminants, and exceed Class 1 on maximum oil content (mg/m³).

Features

- Removes Liquid Aerosols and Sub-micron Particles
- Liquids Gravitate to the Bottom of the Element and Will Not Re-enter the Airstream
- Oil Free Air for Critical Applications, such as Air Gauging and Pneumatic Instrumentation and Controls
- Interchangeable Manual and Piston Drains
- Differential Pressure Indicator Standard

Materials of Construction

Body	Zinc	
Bowls	Plastic Bowl	Polycarbonate
	Metal Bowl	Zinc
Drain	Plastic	
Element Holder	Acetal	
Filter Element	Type "B", "C"	Borosilicate & Felt Glass Fibers
Seals	Nitrile	
Sight Gauge DPI	Polyamide (Nylon)	



NOTE: Barb (Piston Drain) accepts 3/16" ID tubing.

Dimensions

Models	Inches (mm)	A	B	C	C ₁	D [†]	E [†]	F	G
Standard Unit M12-XX-CK00		2.00 (51)	2.06 (52)	1.50 (38)	1.86 (47)	5.35 (136)	6.85 (174)	1.77 (45)	4.50 (114)

[†] With Manual or Piston Drain

= "Most Popular"

Replacement Bowl Kits

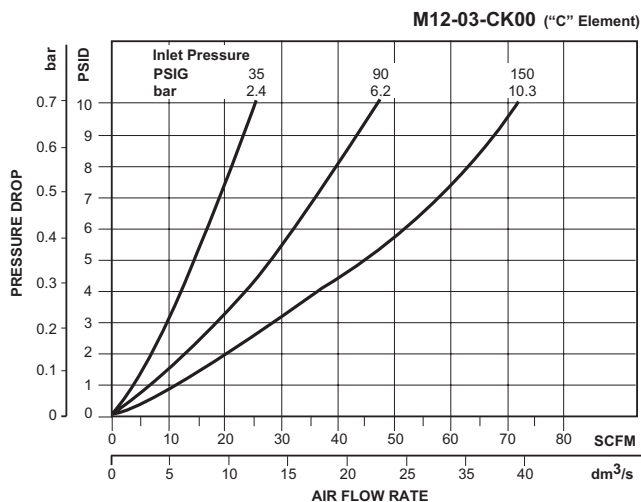
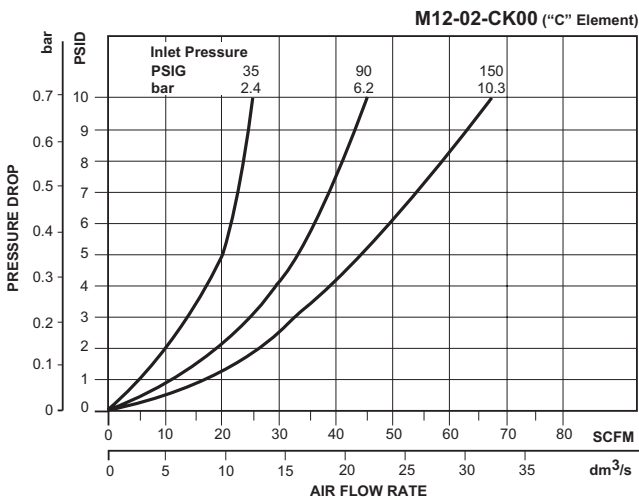
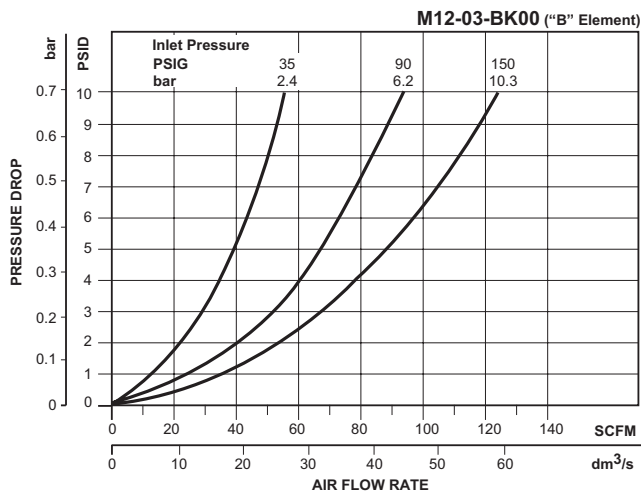
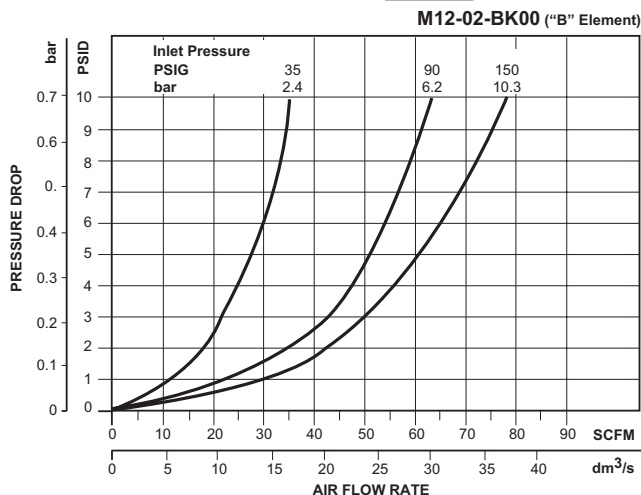
- Metal Bowl Guard GRP-96-345
- Metal Bowl –
 - Manual Drain GRP-96-348
 - Piston Drain GRP-96-353
 - Sight Gauge / Manual Drain GRP-96-349
 - Sight Gauge / Piston Drain GRP-96-352
- Plastic Bowl –
 - Manual Drain GRP-96-347
 - Piston Drain GRP-96-351

Replacement Element Kits

- Type "B", 0.7 Micron (Optional) MRP-96-301
- Type "C", 0.01 Micron (Standard) MRP-96-300

Accessories

- DPI Replacement Kit FRP-96-300
- Drain Kit –
 - Manual Drain GRP-96-340
 - Piston Drain GRP-96-354
- Electronic DPI Kit PS764
- Mounting Bracket Kit GPA-96-300
- Sight Gauge Kit GRP-96-346



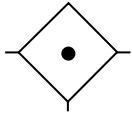
Ordering Information

Model Type	Port Size	Plastic Bowl / Bowl Guard	Metal Bowl / Sight Gauge
Manual Drain	1/4	M12-02-CK00	M12-02-CL00
	3/8	M12-03-CK00	M12-03-CL00
Automatic Piston Drain	1/4	M12-02-CR00	M12-02-CS00
	3/8	M12-03-CR00	M12-03-CS00

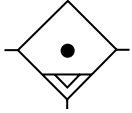
Options - To order an option supplied with the unit model, add the appropriate coded suffix letter in the designated position of the model number.

Coalescing Filter

M18



Coalescing Filter



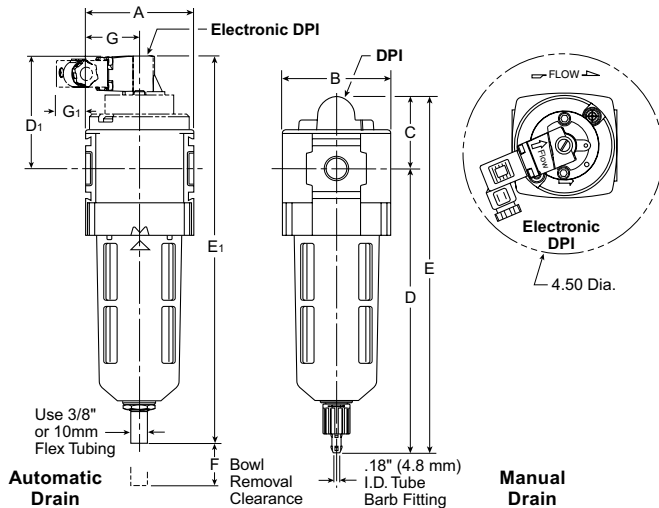
Auto Drain



M18-02-CK00

Features

- High-efficiency Removal of Water, Oil Aerosols, and Solid Particulate Contaminants Down to 0.01 mg/m³ with Minimum Pressure Drop
- Modern Design and Appearance
- Light Weight
- High Flow Capacity
- Bowl Guard
- Quick-disconnect Bowl



Specifications

Flow Capacity*	1/4	40 SCFM (18.9 dm ³ /s)
	3/8	44 SCFM (20.3 dm ³ /s)
	1/2	48 SCFM (22.6 dm ³ /s)
Maximum Supply Pressure	Plastic Bowl	150 PSIG (10.3 bar) †
	Metal Bowl	150 PSIG (10.3 bar) †
Operating Temperature	Plastic Bowl	32° to 125°F (0° to 52°C)
	Metal Bowl	32° to 150°F (0° to 65.5°C)
Port Size	NPT / BSPP-G 1/4, 3/8, 1/2	
Standard Filtration	Micron	(B) 0.5, (C) 0.01
		(D) 0.003 mg/m ³ **
Weight	1.1 lb (0.5 kg)	

* Inlet pressure 150 PSIG (10.3 bar). Pressure drop 3 PSID (0.2 bar) (dry element).

** Filtration temperature of 70°F (21°C) @ 100 PSIG (6.9 bar) with typical compressor lubricating oil and protected by Type C filter.

† Without pressure indicator — max. supply pressure for metal bowl version is 250 PSIG (17.2 bar).

“M” Series Coalescing Filters, with Type “B” 0.5 micron elements: All Wilkerson Type “M” Oil Removal (Coalescing) Filters with Type “B” 0.5 micron elements **exceed ISO Class 2** for maximum particle size and concentration of solid contaminants, and exceed Class 3 on maximum oil content (mg/m³).

“M” Series Coalescing Filters, with Type “C” 0.01 micron elements: All Wilkerson Type “M” Oil Removal (Coalescing) Filters with Type “C” 0.01 micron elements **exceed ISO Class 1** for maximum particle size and concentration of solid contaminants, and exceed Class 1 on maximum oil content (mg/m³).

“M” Series Adsorption Filters, with Type “D” 0.003 micron activated carbon elements: All Wilkerson Type “M” adsorption filters with Type “D” 0.003 micron activated carbon elements **exceed ISO Class 1** on maximum oil content (mg/m³).

Materials of Construction

Body	Zinc	
Body Cap	ABS	
Bowl	Plastic Bowl	Polycarbonate
	Metal Bowl	Aluminum
Filter Element	Type “B”, “C”	Borosilicate Cloth
	Type “D”	Activated Carbon
Seals	Nitrile	
Sight Gauge	Metal Bowl	Polyamide (Nylon)

Dimensions

Models	Inches (mm)	A	B	C	D	D ₁	E	E ₁	F	G	G ₁
Standard Unit M18-XX-CK00		2.36 (60)	2.36 (60)	1.90 (48)	6.32 (161)	—	8.23 (209)	—	1.60 (41)	1.18 (30)	—
Automatic Drain M18-XX-CG00		2.36 (60)	2.36 (60)	1.90 (48)	5.98 (152)	—	8.00 (203)	—	1.60 (41)	1.18 (30)	—
Electronic Differential Pressure Indicator		2.36 (60)	2.36 (60)	—	6.41 (163)	2.67 (68)	—	9.05 (230)	1.60 (41)	1.18 (30)	.69 (18)
Metal Bowl with Sight Gauge / Automatic Drain		2.36 (60)	2.70 (69)	1.90 (48)	5.98 (152)	—	8.00 (203)	—	1.60 (41)	1.18 (30)	—
Metal Bowl with Sight Gauge / Manual Drain		2.36 (60)	2.70 (69)	1.90 (48)	6.32 (161)	—	8.23 (209)	—	1.60 (41)	1.18 (30)	—

= "Most Popular"

Replacement Bowl Kits

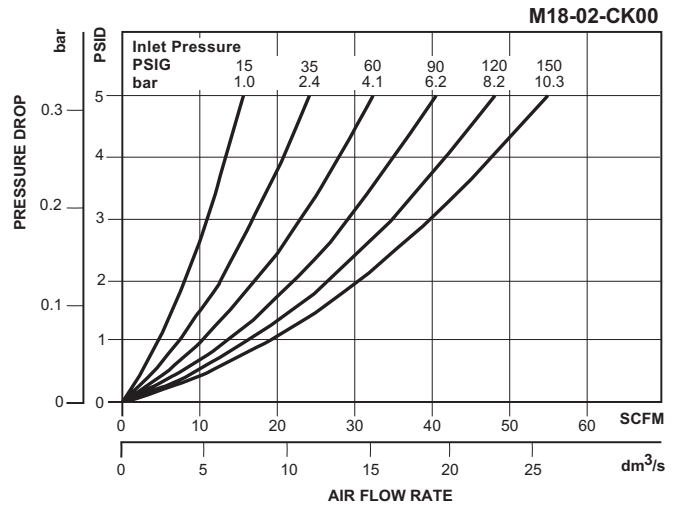
- Metal Bowl with Sight Gauge,
Automatic Float Drain..... GRP-96-637
- Metal Bowl with Sight Gauge, Manual Drain..... GRP-96-636
- Plastic Bowl –
Bowl Guard, Auto Drain..... GRP-96-635
- Bowl Guard, Manual Drain..... GRP-96-634
- Bowl Guard, No Drain..... GRP-96-638

Replacement Element Kits

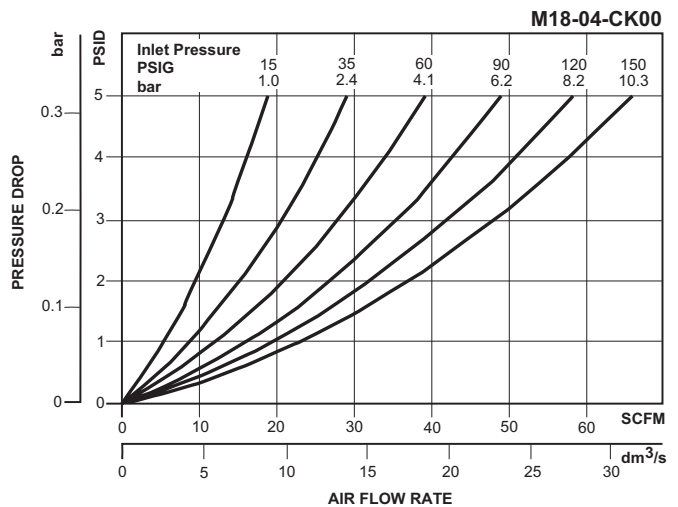
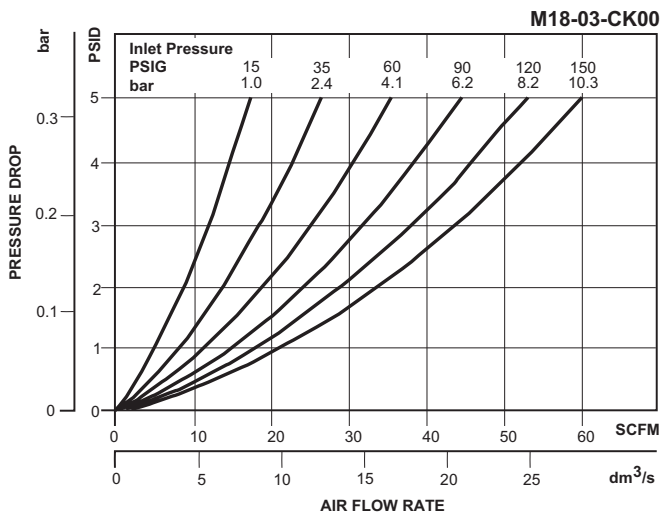
- Type "B", 0.5 Micron..... MSP-96-647
- Type "C", 0.01 Micron..... MTP-96-646
- Type "D", 0.003 Micron Activated Carbon..... MXP-96-650

Accessories

- Automatic Drain –
Fluorocarbon..... GRP-95-981
- Nitrile..... GRP-95-973
- DPI Replacement Kit..... DP8-01-000
- Electronic DPI Conversion Kit..... GRP-96-823
(Converts visual DPI to electronic DPI)
- Electronic DPI Replacement Kit..... GRP-96-824
- Manual Drain..... GRP-96-685
- Sight Gauge Kit..... GRP-96-825
- Wall Mounting Bracket –
L-Type..... GPA-96-604
- T-Type..... GPA-96-602



B



Ordering Information

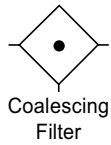
Model Type	Port Size	Plastic Bowl / Bowl Guard / C Element	Plastic Bowl / Bowl Guard / B Element	Plastic Bowl / Bowl Guard / D Element	Metal Bowl / Sight Gauge / C Element	Metal Bowl / Sight Gauge / B Element	Metal Bowl / Sight Gauge / D Element
Manual Drain	1/4	M18-02-CK00	M18-02-BK00	M18-02-DK00	M18-02-CL00	M18-02-BL00	M18-02-DL00
	3/8	M18-03-CK00	M18-03-BK00	M18-03-DK00	M18-03-CL00	M18-03-BL00	M18-03-DL00
	1/2	M18-04-CK00	M18-04-BK00	M18-04-DK00	M18-04-CL00	M18-04-BL00	M18-04-DL00
Automatic Drain	1/4	M18-02-CG00	M18-02-BG00	N/A	M18-02-CH00	M18-02-BH00	N/A
	3/8	M18-03-CG00	M18-03-BG00	N/A	M18-03-CH00	M18-03-BH00	N/A
	1/2	M18-04-CG00	M18-04-BG00	N/A	M18-04-CH00	M18-04-BH00	N/A

Options - To order an option supplied with the unit model, add the appropriate coded suffix letter in the designated position of the model number.

Coalescing Filter

M16

= "Most Popular"



M16-02-000

Features

- Manual Drain
- 0.01 Micron Rated Filter Element
- Quick-disconnect Bowl Guard with Integral Plastic Bowl and Safety Latch
- Differential Pressure Indicator Standard

Specifications

Flow Capacity*	1/4	37.0 SCFM (17.5 dm ³ /s)
	3/8	44.7 SCFM (21.0 dm ³ /s)
	1/2	46.1 SCFM (21.7 dm ³ /s)
Maximum Supply Pressure	Plastic Bowl	150 PSIG (10.3 bar)
	Metal Bowl	200 PSIG (13.8 bar)
Operating Temperature	Plastic Bowl	32° to 125°F (0° to 52°C)
	Metal Bowl	32° to 150°F (0° to 65.5°C)
Port Size	NPT / BSPP-G	1/4, 3/8, 1/2
Standard Filtration	Micron	(B) 0.5, (C) 0.01
		(D) 0.003 mg/m ³ **
Weight	1.8 lb.(0.8 kg)	

* Inlet pressure 150 PSIG (10.3 bar). Pressure drop 3 PSID (0.2 bar).

** Filtration temperature of 70°F (21°C) @100 PSIG (6.9 bar) with typical compressor lubricating oil and protected by Type "C" filter.

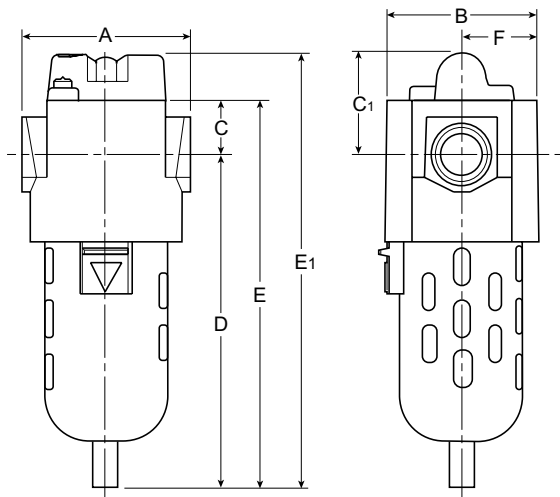
"M" Series Coalescing Filters, with Type "B" 0.5 micron elements: All Wilkerson Type "M" Oil Removal (Coalescing) Filters with Type "B" 0.5 micron elements **exceed ISO Class 2** for maximum particle size and concentration of solid contaminants, and exceed Class 3 on maximum oil content (mg/m³).

"M" Series Coalescing Filters, with Type "C" 0.01 micron elements: All Wilkerson Type "M" Oil Removal (Coalescing) Filters with Type "C" 0.01 micron elements **exceed ISO Class 1** for maximum particle size and concentration of solid contaminants, and exceed Class 1 on maximum oil content (mg/m³).

"M" Series Adsorption Filters, with Type "D" 0.003 micron activated carbon elements: All Wilkerson Type "M" adsorption filters with Type "D" 0.003 micron activated carbon elements **exceed ISO Class 1** on maximum oil content (mg/m³).

Materials of Construction

Body	Zinc	
Bowls	Plastic Bowl	Polycarbonate
	Metal Bowl	Zinc
Element Retainer	Brass Stud	
Filter Elements	Type "B", "C"	Borosilicate Cloth
	Type "D"	Activated Carbon
Seals	Fluorocarbon	



Dimensions

Models	Inches (mm)	A	B	C	C ₁	D	E	E ₁	F
Standard Unit M16-XX-000		3.00 (76)	2.60 (66)	1.00 (25.4)	1.83 (46.5)	5.67 (144)	6.67 (169)	7.50 (190.5)	1.30 (33)
Automatic Drain M16-XX-F00		3.00 (76)	2.60 (66)	1.00 (25.4)	1.83 (46.5)	5.81 (148)	6.81 (173)	7.64 (190.5)	1.30 (33)

= "Most Popular"

Replacement Bowl Kits

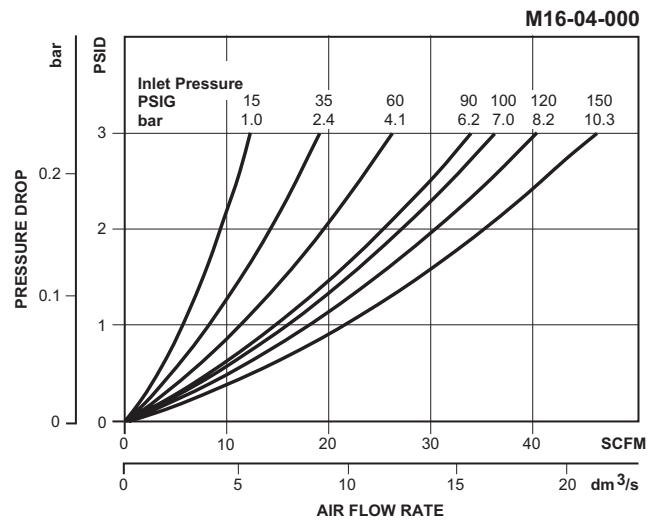
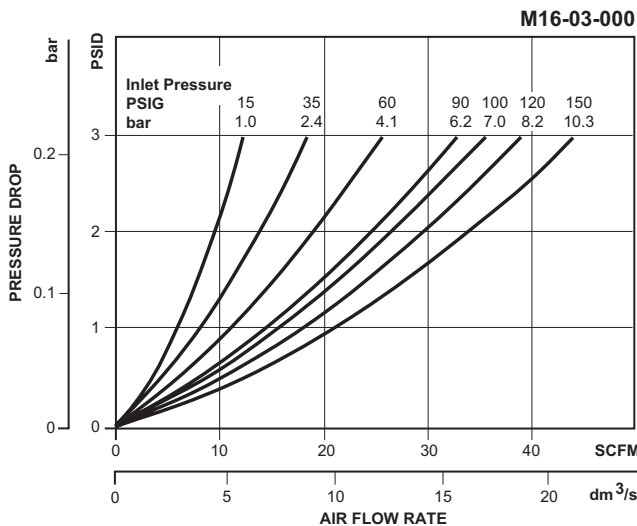
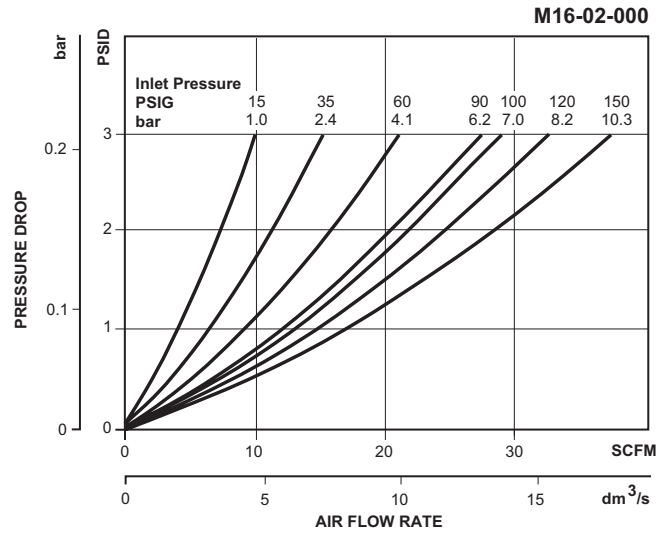
- Metal Bowl –
 - Automatic DrainFRP-95-950
 - Manual DrainFRP-95-178
- Plastic Bowl –
 - Bowl Guard, Auto Drain.....FRP-95-015
 - Bowl Guard, Manual Drain.....FRP-95-014
 - Manual DrainFRP-95-017

Replacement Element Kits

- Type "B", 0.5 Micron.....MSP-95-988
- Type "C", 0.01 Micron.....MTP-95-548
- Type "D", Oil Vapor Removing.....MXP-95-987

Accessories

- Automatic Mechanical Drain GRP-95-973
- Cap, Differential Pressure Indicator –
 - For pressures over 150 PSIG..... GRP-95-020
- Differential Pressure Indicator DP2-01-000
- Manual Drain.....FRP-95-610
- Sight Gauge Kit.....GRP-95-079
- Wall Mounting Bracket, L-TypeGPA-95-016



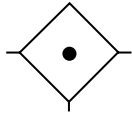
Ordering Information

Model Type	Port Size	Polycarbonate Bowl / Bowl Guard / "C" Element	Metal Bowl / "C" Element	Polycarbonate Bowl / Bowl Guard / "B" Element	Polycarbonate Bowl / Bowl Guard / "D" Element (No DPI)
Manual Drain	1/4	M16-02-000	M16-02-M00	M16-02-S00	M16-02-X00
	3/8	M16-03-000	M16-03-M00	M16-03-S00	M16-03-X00
	1/2	M16-04-000	M16-04-M00	M16-04-S00	M16-04-X00
Automatic Drain	1/4	M16-02-F00	M16-02-FM0	M16-02-FS0	—
	3/8	M16-03-F00	M16-03-FM0	M16-03-FS0	—
	1/2	M16-04-F00	M16-04-FM0	M16-04-FS0	—

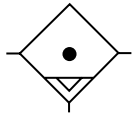
Options - To order an option supplied with the unit model, add the appropriate coded suffix letter in the designated position of the model number.

Coalescing Filter

M28



Coalescing Filter



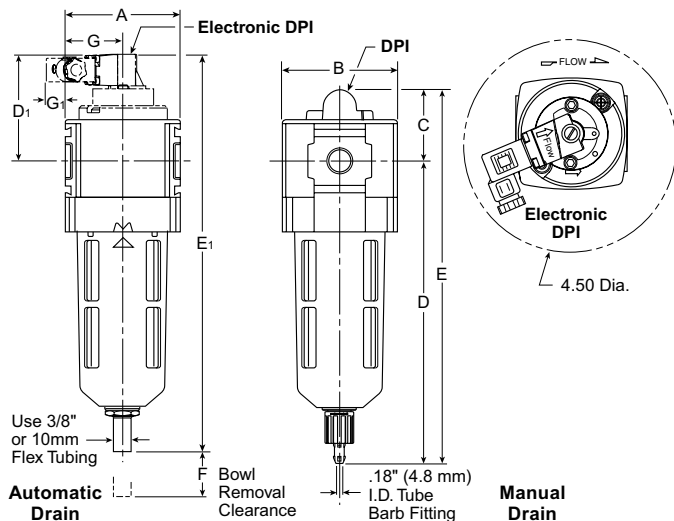
Auto Drain



M28-03-CG00

Features

- High-efficiency Removal of Water, Oil Aerosols, and Solid Particulate Contaminants Down to 0.01 mg/m³ with Minimum Pressure Drop
- Modern Design and Appearance
- Light Weight
- High Flow Capacity
- Bowl Guard
- Quick-disconnect Bowl



Specifications

Flow Capacity*	3/8	82 SCFM (38.7 dm ³ /s)
	1/2	90 SCFM (42.5 dm ³ /s)
	3/4	98 SCFM (46.3 dm ³ /s)
Maximum Supply Pressure	Plastic Bowl	150 PSIG (10.3 bar) †
	Metal Bowl	150 PSIG (10.3 bar) †
Operating Temperature	Plastic Bowl	32° to 125°F (0° to 52°C)
	Metal Bowl	32° to 150°F (0° to 65.5°C)
Port Size	NPT / BSPP-G 3/8, 1/2, 3/4	
Standard Filtration	Micron	(B) 0.5, (C) 0.01
		(D) 0.003 mg/m ³ **
Weight	1.7 lb. (0.8 kg)	

* Inlet pressure 150 PSIG (10.3 bar). Pressure drop 3 PSID (0.2 bar).

** Filtration temperature of 70°F (21°C) @ 100 PSIG (6.9 bar) with typical compressor lubricating oil and protected by Type C filter.

† Without pressure indicator—max. supply pressure for metal bowl version is 250 PSIG (17.2 bar)

“M” Series Coalescing Filters, with Type “B” 0.5 micron elements: All Wilkerson Type “M” Oil Removal (Coalescing) Filters with Type “B” 0.5 micron elements **exceed ISO Class 2** for maximum particle size and concentration of solid contaminants, and exceed Class 3 on maximum oil content (mg/m³).

“M” Series Coalescing Filters, with Type “C” 0.01 micron elements: All Wilkerson Type “M” Oil Removal (Coalescing) Filters with Type “C” 0.01 micron elements **exceed ISO Class 1** for maximum particle size and concentration of solid contaminants, and exceed Class 1 on maximum oil content (mg/m³).

“M” Series Adsorption Filters, with Type “D” 0.003 micron activated carbon elements: All Wilkerson Type “M” adsorption filters with Type “D” 0.003 micron activated carbon elements **exceed ISO Class 1** on maximum oil content (mg/m³).

Materials of Construction

Body	Zinc	
Body Cap	ABS	
Bowls	Plastic Bowl	Polycarbonate
	Metal Bowl	Aluminum
Filter Element	Type “B”, “C”	Borosilicate Cloth
	Type “D”	Activated Carbon
Seals	Nitrile	
Sight Gauge	Metal Bowl	Polyamide (Nylon)

Dimensions

Models	Inches (mm)	A	B	C	D	D ₁	E	E ₁	F	G	G ₁
Standard Unit M28-XX-CK00		2.90 (74)	2.90 (74)	1.90 (48)	7.35 (187)	—	9.25 (235)	—	2.00 (51)	1.40 (36)	—
Automatic Drain M28-XX-CG00		2.90 (74)	2.90 (74)	1.90 (48)	6.99 (178)	—	9.02 (229)	—	2.00 (51)	1.40 (36)	—
Electronic Differential Pressure Indicator		2.90 (74)	2.90 (74)	—	7.35 (187)	2.68 (68)	—	10.07 (256)	2.00 (51)	1.40 (36)	.43 (11)
Metal Bowl with Sight Gauge / Automatic Drain		2.90 (74)	3.23 (82)	1.90 (48)	6.99 (178)	—	9.02 (229)	—	2.00 (51)	1.40 (36)	—
Metal Bowl with Sight Gauge / Manual Drain		2.90 (74)	3.23 (82)	1.90 (48)	7.35 (187)	—	9.25 (235)	—	2.00 (51)	1.40 (36)	—

= "Most Popular"

Replacement Bowl Kits

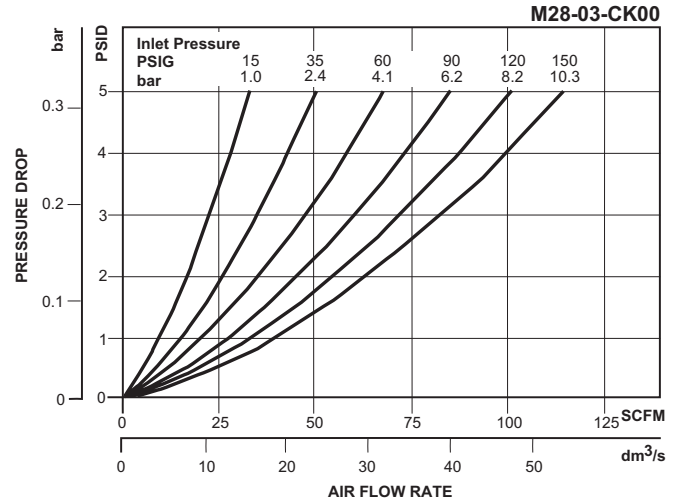
- Metal Bowl with Sight Gauge,
Automatic Float Drain..... GRP-96-645
- Metal Bowl with Sight Gauge, Manual Drain..... GRP-96-644
- Plastic Bowl –
Bowl Guard, Auto Drain..... GRP-96-643
- Bowl Guard, Manual Drain..... GRP-96-642
- Bowl Guard, No Drain..... GRP-96-652

Replacement Element Kits

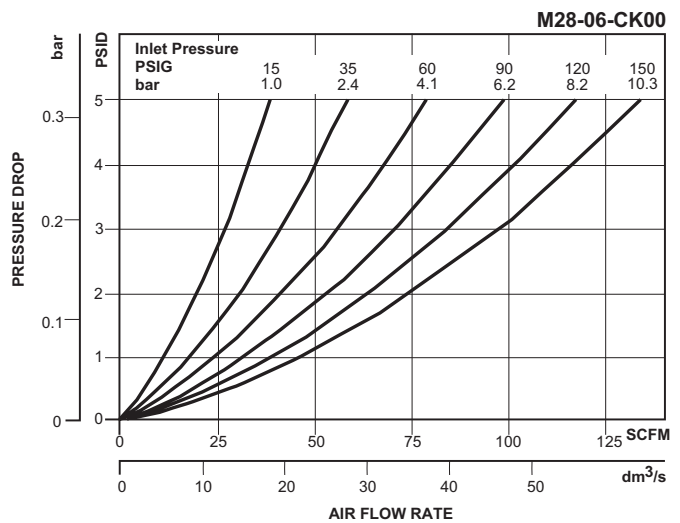
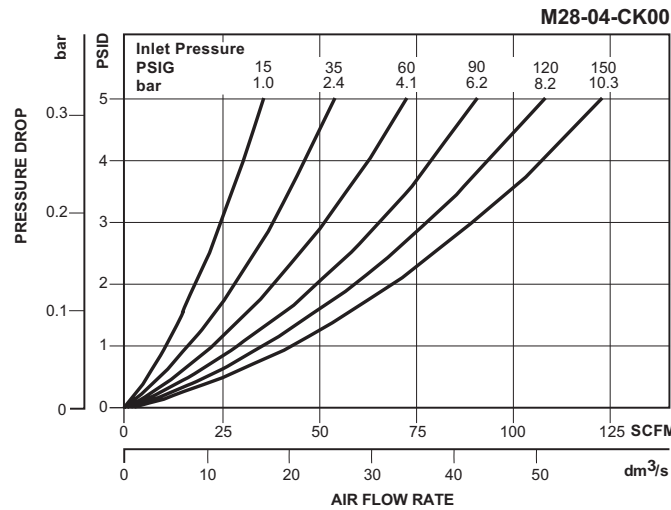
- Type "B", 0.5 Micron..... MSP-96-649
- Type "C", 0.01 Micron..... MTP-96-648
- Type "D", 0.003 Micron Activated Carbon..... MXP-96-651

Accessories

- Automatic Drain –
Fluorocarbon..... GRP-95-981
- Nitrile..... GRP-95-973
- DPI Replacement Kit..... DP8-01-000
- Electronic DPI Conversion Kit..... GRP-96-823
(Converts visual DPI to electronic DPI)
- Electronic DPI Replacement Kit..... GRP-96-824
- Manual Drain..... GRP-96-685
- Sight Gauge Kit..... GRP-96-825
- Wall Mounting Bracket–
L-Type..... GPA-96-605
- T-Type..... GPA-96-602



B



Ordering Information

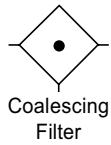
Model Type	Port Size	Plastic Bowl / Bowl Guard / C Element	Plastic Bowl / Bowl Guard / B Element	Plastic Bowl / Bowl Guard / D Element	Metal Bowl / Sight Gauge / C Element	Metal Bowl / Sight Gauge / B Element	Metal Bowl / Sight Gauge / D Element
Manual Drain	3/8	M28-03-CK00	M28-03-BK00	M28-03-DK00	M28-03-CL00	M28-03-BL00	M28-03-DL00
	1/2	M28-04-CK00	M28-04-BK00	M28-04-DK00	M28-04-CL00	M28-04-BL00	M28-04-DL00
	3/4	M28-06-CK00	M28-06-BK00	M28-06-DK00	M28-06-CL00	M28-06-BL00	M28-06-DL00
Automatic Drain	3/8	M28-03-CG00	M28-03-BG00	N/A	M28-03-CH00	M28-03-BH00	N/A
	1/2	M28-04-CG00	M28-04-BG00	N/A	M28-04-CH00	M28-04-BH00	N/A
	3/4	M28-06-CG00	M28-06-BG00	N/A	M28-06-CH00	M28-06-BH00	N/A

Options - To order an option supplied with the unit model, add the appropriate coded suffix letter in the designated position of the model number.

Coalescing Filter

M26

= "Most Popular"



M26-02-000

Features

- Manual Drain
- 0.01 Micron Rated Filter Element
- Quick-disconnect Bowl Guard with Integral Plastic Bowl and Safety Latch
- Differential Pressure Indicator

Specifications

Flow Capacity*	1/4	55.0 SCFM (25.9 dm ³ /s)
	3/8	65.5 SCFM (30.9 dm ³ /s)
	1/2	79.5 SCFM (37.5 dm ³ /s)
Maximum Supply Pressure	Plastic Bowl	150 PSIG (10.3 bar)
	Metal Bowl	200 PSIG (13.8 bar)
Operating Temperature	Plastic Bowl	32° to 125°F (0° to 52°C)
	Metal Bowl	32° to 150°F (0° to 65.5°C)
Standard Filtration	Micron	(B) 0.5, (C) 0.01
		(D) 0.003 mg/m ³ **
Port Size	NPT / BSPP-G	1/4, 3/8, 1/2
Weight	2.4 lb. (1.1 kg)	

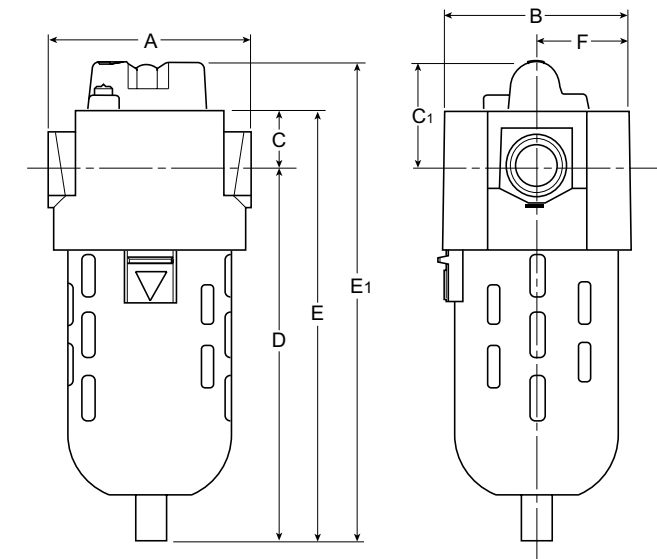
* Inlet pressure 150 PSIG (10.3 bar). Pressure drop of 3 PSID (0.2 bar).

** Filtration temperature of 70°F (21°C) @100 PSIG (6.9 bar) with typical compressor lubricating oil and protected by Type "C" filter.

"M" Series Coalescing Filters, with Type "B" 0.5 micron elements: All Wilkerson Type "M" Oil Removal (Coalescing) Filters with Type "B" 0.5 micron elements **exceed ISO Class 2** for maximum particle size and concentration of solid contaminants, and exceed Class 3 on maximum oil content (mg/m³).

"M" Series Coalescing Filters, with Type "C" 0.01 micron elements: All Wilkerson Type "M" Oil Removal (Coalescing) Filters with Type "C" 0.01 micron elements **exceed ISO Class 1** for maximum particle size and concentration of solid contaminants, and exceed Class 1 on maximum oil content (mg/m³).

"M" Series Adsorption Filters, with Type "D" 0.003 micron activated carbon elements: All Wilkerson Type "M" adsorption filters with Type "D" 0.003 micron activated carbon elements **exceed ISO Class 1** on maximum oil content (mg/m³).



Materials of Construction

Body	Zinc	
Bowls	Plastic Bowl	Polycarbonate
	Metal Bowl	Zinc
Element Retainer	Brass Stud	
Filter Elements	Type "B", "C"	Borosilicate Cloth
	Type "D"	Activated Carbon
Seals	Fluorocarbon	

Dimensions

Models	Inches (mm)	A	B	C	C ₁	D	E	E ₁	F
Standard Unit M26-XX-000		3.30 (84)	3.00 (76)	1.00 (25.4)	1.83 (46.5)	6.40 (162.6)	7.40 (188)	8.23 (209)	1.50 (38)
Automatic Drain M26-XX-F00		3.30 (84)	3.00 (76)	1.00 (25.4)	1.83 (46.5)	6.54 (166)	7.54 (191.5)	8.37 (212.5)	1.50 (38)

= "Most Popular"

Replacement Bowl Kits

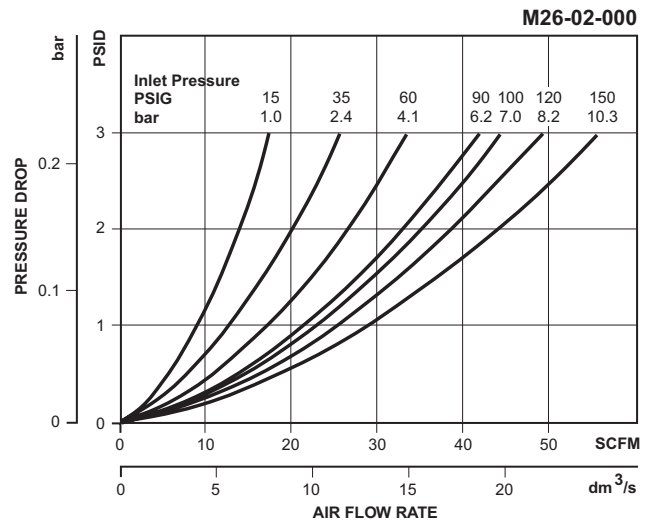
- Metal Bowl –
 - Manual Drain GRP-95-930
 - Auto Drain..... GRP-95-960
- Plastic Bowl –
 - Manual Drain GRP-95-929
 - Bowl Guard, Manual Drain GRP-95-935
 - Bowl Guard, Auto Drain..... GRP-95-948

Replacement Element Kits

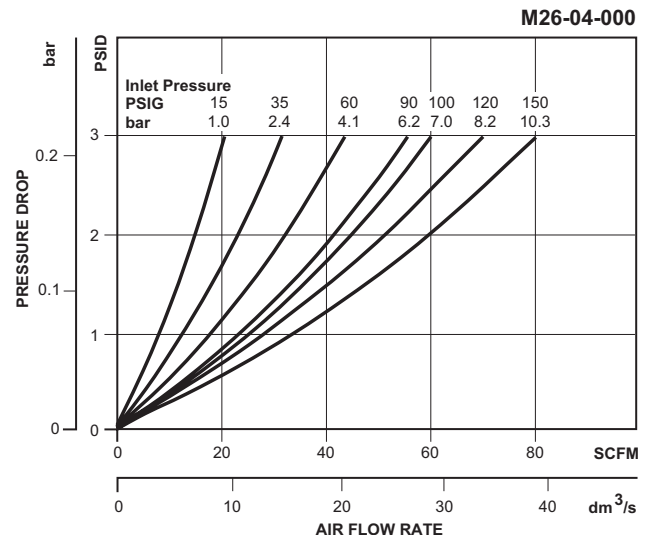
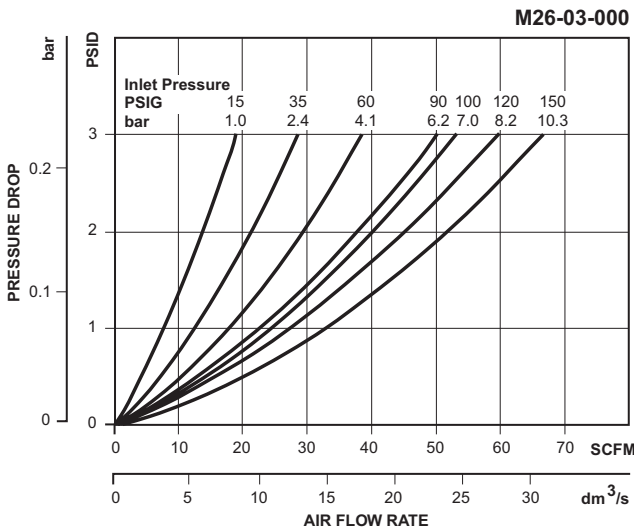
- Type "B", 0.5 Micron..... MSP-95-989
- Type "C", 0.01 Micron..... MTP-95-549
- Type "D", Oil Vapor Removing..... MXP-95-540

Accessories

- Automatic Mechanical Drain..... GRP-95-973
- Cap, Differential Pressure Indicator –
 - For pressures over 150 PSIG..... GRP-95-020
- Differential Pressure Indicator DP2-01-000
- Manual Flex-Tip..... FRP-95-610
- Sight Gauge Kit..... GRP-95-079
- Wall Mounting Bracket, L-Type GPA-95-946



B



Ordering Information

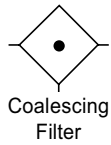
Model Type	Port Size	Polycarbonate Bowl / Bowl Guard / "C" Element	Metal Bowl / "C" Element	Polycarbonate Bowl / Bowl Guard / "B" Element	Polycarbonate Bowl / Bowl Guard / "D" Element (No DPI)
Manual Drain	1/4	M26-02-000	M26-02-M00	M26-02-S00	M26-02-X00
	3/8	M26-03-000	M26-03-M00	M26-03-S00	M26-03-X00
	1/2	M26-04-000	M26-04-M00	M26-04-S00	M26-04-X00
Automatic Drain	1/4	M26-02-F00	M26-02-FM0	M26-02-FS0	—
	3/8	M26-03-F00	M26-03-FM0	M26-03-FS0	—
	1/2	M26-04-F00	M26-04-FM0	M26-04-FS0	—

Options - To order an option supplied with the unit model, add the appropriate coded suffix letter in the designated position of the model number.

Coalescing Filter

M21

= "Most Popular"



M21-03-000

Features

- Manual Drain
- 0.01 Micron Rated Filter Element
- Quick-disconnect Bowl Guard with Integral Plastic Bowl and Safety Latch
- Differential Pressure Indicator

Specifications

Flow Capacity*	3/8	95.4 SCFM (45.0 dm ³ /s)
Maximum Supply Pressure	Plastic Bowl	150 PSIG (10.3 bar)
Operating Temperature	Plastic Bowl	32° to 125°F (0° to 52°C)
Port Size	NPT / BSPP-G	3/8
Standard Filtration	Micron	(B) 0.5, (C) 0.01 (D) 0.003 mg/m ³ **
Weight		3.7 lb. (1.68 kg)

* Inlet pressure 150 PSIG (10.3 bar). Pressure drop of 3 PSID (0.2 bar).

** Filtration temperature of 70°F (21°C) @100 PSIG (6.9 bar) with typical compressor lubricating oil and protected by Type "C" filter.

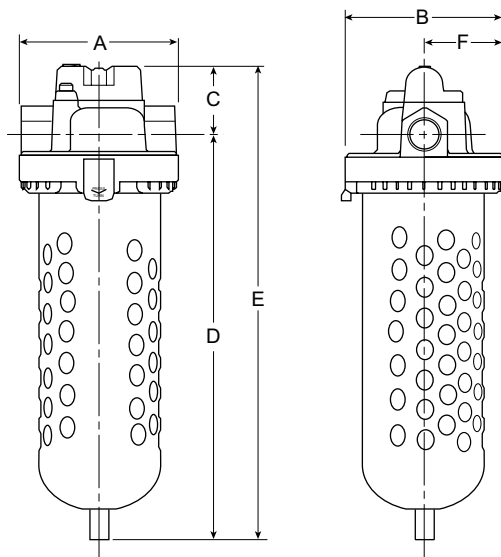
"M" Series Coalescing Filters, with Type "B" 0.5 micron elements: All Wilkerson Type "M" Oil Removal (Coalescing) Filters with Type "B" 0.5 micron elements **exceed ISO Class 2** for maximum particle size and concentration of solid contaminants, and exceed Class 3 on maximum oil content (mg/m³).

"M" Series Coalescing Filters, with Type "C" 0.01 micron elements: All Wilkerson Type "M" Oil Removal (Coalescing) Filters with Type "C" 0.01 micron elements **exceed ISO Class 1** for maximum particle size and concentration of solid contaminants, and exceed Class 1 on maximum oil content (mg/m³).

"M" Series Adsorption Filters, with Type "D" 0.003 micron activated carbon elements: All Wilkerson Type "M" adsorption filters with Type "D" 0.003 micron activated carbon elements **exceed ISO Class 1** on maximum oil content (mg/m³).

Materials of Construction

Body	Zinc	
Bowl	Polycarbonate	
Element Retainer	Brass Stud	
Filter Elements	Type "B", "C" Type "D"	Borosilicate Cloth Activated Carbon
Seals	Fluorocarbon	



Dimensions

Models	Inches (mm)	A	B	C	D	E	F
Standard Unit M21-03-000		3.70 (94)	3.79 (96.5)	1.70 (43.2)	9.20 (233.7)	10.90 (276.9)	1.89 (48.1)
Automatic Drain M21-03-F00		3.70 (94)	3.79 (96.5)	1.70 (43.2)	9.34 (237)	11.04 (280)	1.89 (48.1)

= "Most Popular"

Replacement Bowl Kits

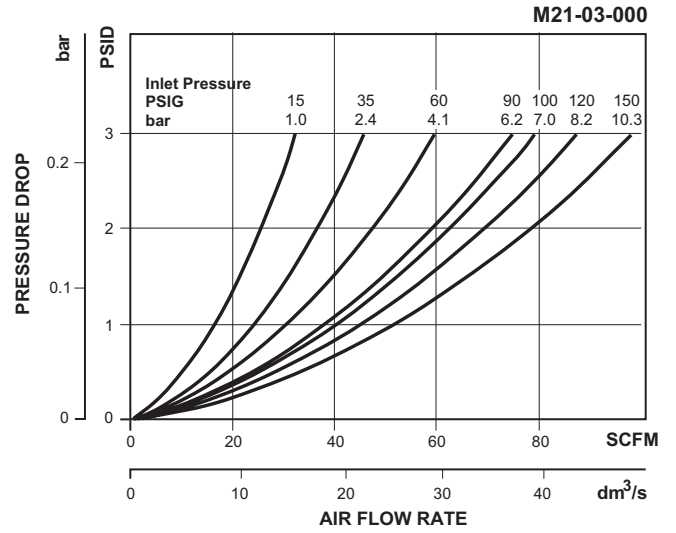
- Plastic Bowl –
- Bowl Guard, Manual Drain FRP-95-722
- Bowl Guard, Automatic Drain MRP-95-722

Replacement Element Kits

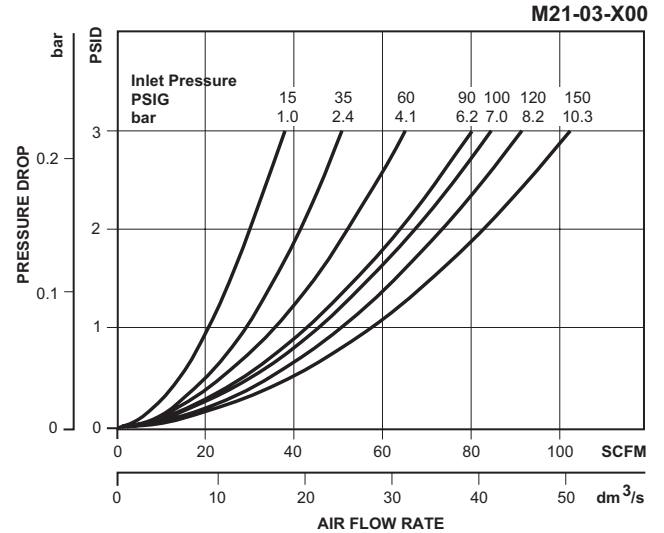
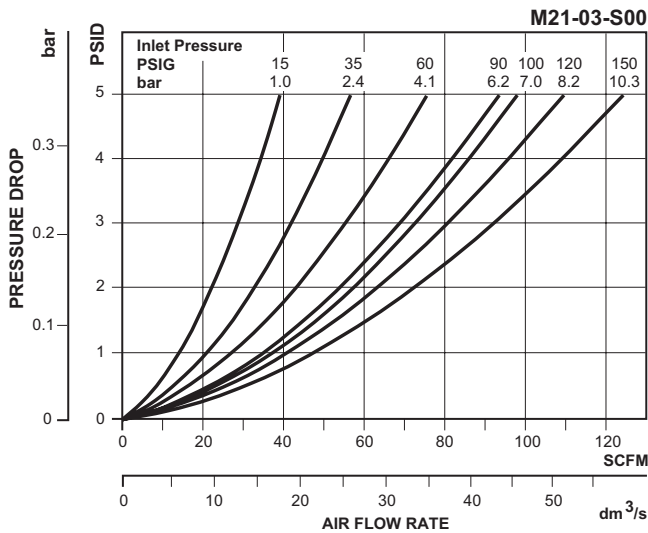
- Type "B", 0.5 Micron MSP-95-990
- Type "C", 0.01 Micron MTP-95-550
- Type "D", Oil Vapor Removing MXP-95-537

Accessories

- Automatic Drain GRP-95-973
- Cap, Differential Pressure Indicator –
- For pressures over 150 PSIG GRP-95-020
- Differential Pressure Indicator DP2-01-000
- Manual Flex-Tip FRP-95-610
- Wall Mounting Bracket, U-bolt Pipe Clamp GRP-95-734



B



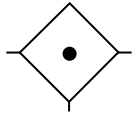
Ordering Information

Model Type	Port Size	Polycarbonate Bowl / Bowl Guard / "C" Element
Manual Drain	3/8	M21-03-000
Automatic Drain	3/8	M21-03-F00

Options - To order an option supplied with the unit model, add the appropriate coded suffix letter in the designated position of the model number.

Coalescing Filter

M39



Coalescing Filter



M39-08-CL00

B

= "Most Popular"

Specifications

Flow Capacity*	3/4	115 SCFM (54 dm ³ /s)
	1	120 SCFM (57 dm ³ /s)
Maximum Supply Pressure	Metal Bowl 250 PSIG (17.2 bar)	
Operating Temperature	32° to 175°F (0° to 80°C)	
Port Size	NPT	3/4, 1
Standard Filtration	Micron	(B) 0.5, (C) 0.01
Weight	lb. (kg)	3.5 lb. (1.6 kg)

* Inlet pressure 101.5 PSIG (7 bar). Pressure drop 3 PSID (0.2 bar).

"M39" Series Coalescing Filters, with Type "B" 0.7 micron elements: Wilkerson Type "M39" Oil Removal (Coalescing) Filters with Type "B" 0.7 micron elements **exceed ISO Class 2** for maximum particle size and concentration of solid contaminants, and exceed Class 3 on maximum oil content (mg/m³).

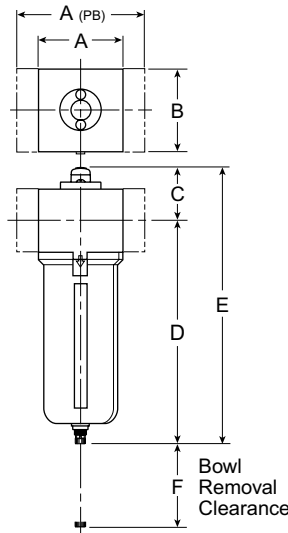
"M" Series Coalescing Filters, with Type "C" 0.01 micron elements: All Wilkerson Type "M" Oil Removal (Coalescing) Filters with Type "C" 0.01 micron elements **exceed ISO Class 1** for maximum particle size and concentration of solid contaminants, and exceed Class 1 on maximum oil content (mg/m³).

Features

- High-efficiency Removal of Water, Oil Aerosols, and Solid Particulate Contaminants Down to 0.01 mg/m³ with Minimum Pressure Drop
- Modern Design and Appearance
- Pressure Differential Indicator Standard
- 3/4" and 1" NPT Ports
- High Flow Capacity
- Quick-disconnect Bowl
- Port Blocks for BSPP Thread and 1-1/2" Port

Materials of Construction

Body	Aluminum	
Bowls	Aluminum	
Filter Element	Type "B", "C"	Borosilicate & Felt Glass Fibers
Seals	Nitrile	
Sight Gauge	Polyamide (Nylon)	



Dimensions

Models	Inches (mm)	A	A(PB)	B	C	D†	E†	F
Standard Unit M39-XX-CL00		3.62 (92)	5.91 (150)	3.62 (92)	2.30 (58)	9.57 (243)	11.90 (302)	4.92 (125)

† With Manual Drain or Internal Auto Drain

= "Most Popular"

Replacement Bowl Kits

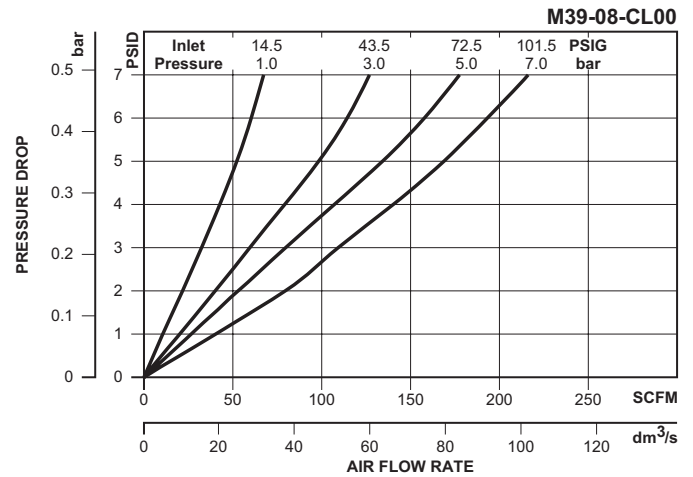
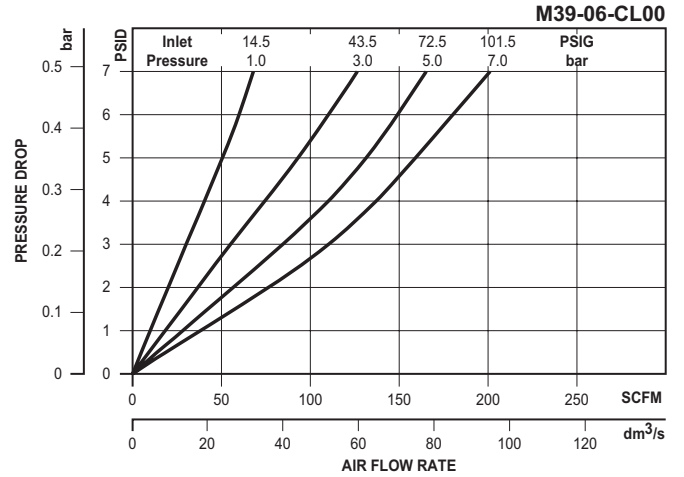
- Metal Bowl –
- Sight Gauge / Internal Auto Drain P3NKA00BSA
- Sight Gauge / Manual Drain.....P3NKA00BSM

Replacement Element Kits

- Type "B", 0.7 Micron.....P3NKA00ES9
- Type "C", 0.01 Micron..... P3NKA00ESC

Accessories

- Bowl Latch Kit C11A33
- DPI Replacement Kit PS781
- Drain Kit –
- Internal Auto DrainPS506
- Manual Drain PS512
- Mounting Bracket Kit P3NKA00MW
- Sight Gauge KitP3NKA00PE



Ordering Information

Model Type	Port Size	Metal Bowl / Sight Gauge
Manual Drain	3/4	M39-06-CL00
	1	M39-08-CL00
Automatic Drain	3/4	M39-06-CH00
	1	M39-08-CH00

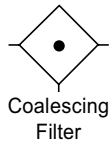
Options - To order an option supplied with the unit model, add the appropriate coded suffix letter in the designated position of the model number.

B

Coalescing Filter

M30

= "Most Popular"



M30-04-000

Features

- Manual Drain
- 0.01 Micron Rated Filter Element
- Quick-disconnect Bowl Guard with Integral Plastic Bowl and Safety Latch
- Differential Pressure Indicator

Specifications

Flow Capacity*	1/2	123 SCFM (58.2 dm ³ /s)
	3/4	173 SCFM (81.0 dm ³ /s)
	1	203 SCFM (96.0 dm ³ /s)
Maximum Supply Pressure	Plastic Bowl	150 PSIG (10.3 bar)
	Metal Bowl	200 PSIG (13.8 bar)
Operating Temperature	Plastic Bowl	32° to 125°F (0° to 52°C)
	Metal Bowl	32° to 150°F (0° to 65.5°C)
Port Size	NPT / BSPP-G	1/2, 3/4, 1
Standard Filtration	Micron	(B) 0.5, (C) 0.01
		(D) 0.003 mg/m ³ **
Weight	5.4 lb. (2.4 kg)	

* Inlet pressure 150 PSIG (10.3 bar). Pressure drop of 3 PSID (0.2 bar).

** Filtration temperature of 70°F (21°C) @100 PSIG (6.9 bar) with typical compressor lubricating oil and protected by Type "C" filter.

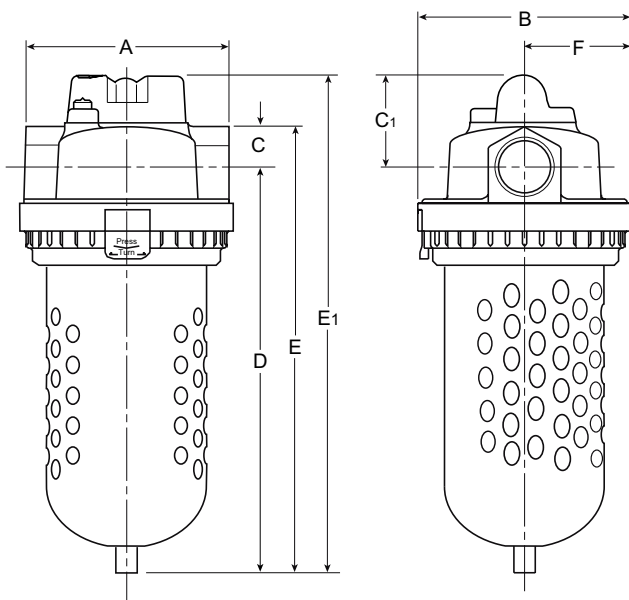
"M" Series Coalescing Filters, with Type "B" 0.5 micron elements: All Wilkerson Type "M" Oil Removal (Coalescing) Filters with Type "B" 0.5 micron elements **exceed ISO Class 2** for maximum particle size and concentration of solid contaminants, and exceed Class 3 on maximum oil content (mg/m³).

"M" Series Coalescing Filters, with Type "C" 0.01 micron elements: All Wilkerson Type "M" Oil Removal (Coalescing) Filters with Type "C" 0.01 micron elements **exceed ISO Class 1** for maximum particle size and concentration of solid contaminants, and exceed Class 1 on maximum oil content (mg/m³).

"M" Series Adsorption Filters, with Type "D" 0.003 micron activated carbon elements: All Wilkerson Type "M" adsorption filters with Type "D" 0.003 micron activated carbon elements **exceed ISO Class 1** on maximum oil content (mg/m³).

Materials of Construction

Body	Zinc	
Bowls	Plastic Bowl	Polycarbonate
	Metal Bowl	Aluminum
Element Retainer	Brass Stud	
Filter Elements	Type "B", "C"	Borosilicate Cloth
	Type "D"	Activated Carbon
Seals	Fluorocarbon	



Dimensions

Models	Inches (mm)	A	B	C	C ₁	D	E	E ₁	F
Standard Unit M30-XX-000		4.61 (117)	4.80 (122)	.94 (24)	1.77 (44.9)	9.13 (232)	10.07 (255.8)	10.90 (270)	2.40 (61)
Automatic Drain M30-XX-F00		4.61 (117)	4.80 (122)	.94 (24)	1.77 (44.9)	9.27 (235)	10.21 (259)	11.04 (273.5)	2.40 (61)
Metal Bowl M30-XX-M00		4.61 (117)	4.80 (122)	.94 (24)	1.77 (44.9)	8.73 (221.7)	9.67 (245.6)	10.50 (267)	2.40 (61)

= "Most Popular"

Replacement Bowl Kits

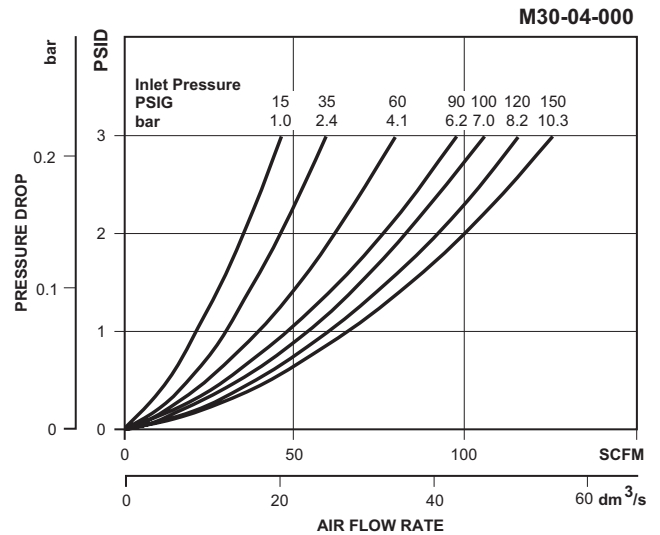
- Metal Bowl –
 Manual DrainFRP-95-593
 Auto Drain.....GRP-95-970
- Plastic Bowl –
 Manual DrainFRP-96-315
 Bowl Guard, Manual Drain.....FRP-95-832
 Bowl Guard, Auto Drain.....FRP-95-775

Replacement Element Kits

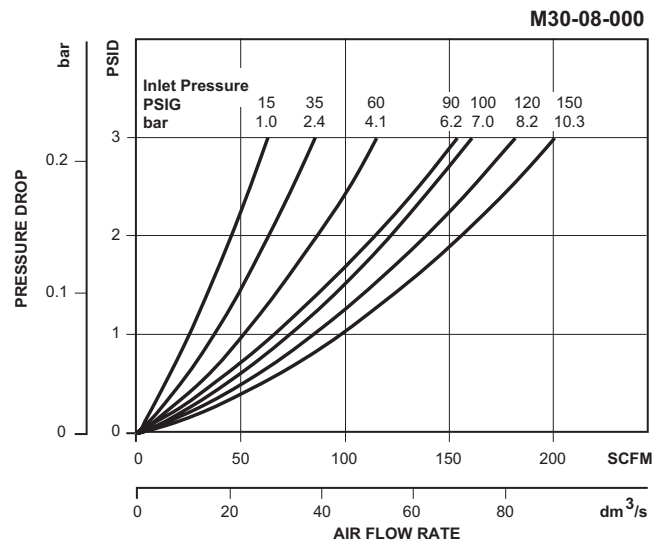
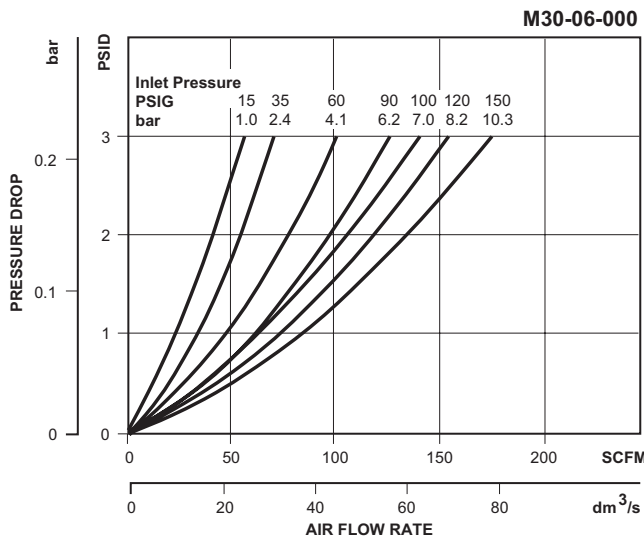
- Type "B", 0.5 Micron.....MSP-95-992
 Type "C", 0.01 Micron.....MTP-95-551
 Type "D", Oil Vapor Removing.....MXP-95-532

Accessories

- Automatic Mechanical Drain GRP-95-973
 Cap, Differential Pressure Indicator –
 For pressures over 150 PSIG..... GRP-95-020
 Differential Pressure Indicator DP2-01-000
 Manual Flex-Tip.....FRP-95-610
 Sight Gauge Kit.....LRP-95-771
 Wall Mounting Bracket, U-Bolt Pipe Clamp..... GRP-95-734



B



Ordering Information

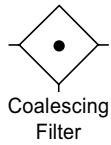
Model Type	Port Size	Polycarbonate Bowl / Bowl Guard / "C" Element	Metal Bowl / "C" Element	Polycarbonate Bowl / Bowl Guard / "B" Element	Polycarbonate Bowl / Bowl Guard / "D" Element (No DPI)
Manual Drain	1/2	M30-04-000	M30-04-M00	M30-04-S00	M30-04-X00
	3/4	M30-06-000	M30-06-M00	M30-06-S00	M30-06-X00
	1	M30-08-000	M30-08-M00	M30-08-S00	M30-08-X00
Automatic Drain	1/2	M30-04-F00	M30-04-FM0	M30-04-FS0	—
	3/4	M30-06-F00	M30-06-FM0	M30-06-FS0	—
	1	M30-08-F00	M30-08-FM0	M30-08-FS0	—

Options - To order an option supplied with the unit model, add the appropriate coded suffix letter in the designated position of the model number.

Coalescing Filter

M31

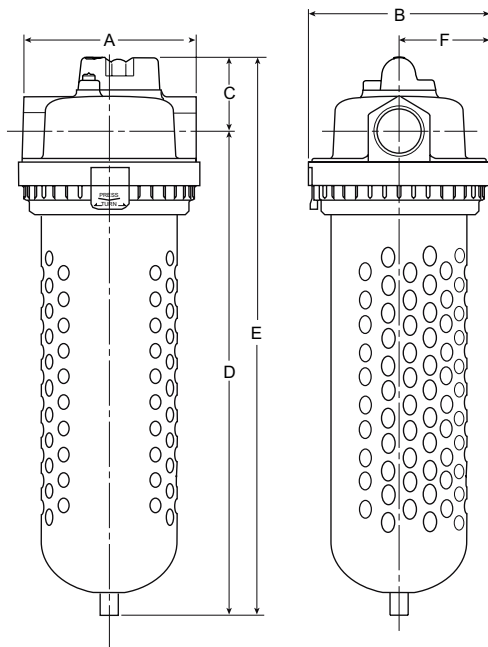
= "Most Popular"



M31-06-000

Features

- Manual Drain
- 0.01 Micron Rated Filter Element
- Quick-disconnect Bowl Guard with Integral Plastic Bowl and Safety Latch
- Differential Pressure Indicator



Dimensions

Models	Inches (mm)	A	B	C	D	E	F
Standard Unit M31-XX-000		4.61 (117)	4.80 (122)	1.90 (48)	13.00 (330)	14.90 (378)	2.40 (61)
Automatic Drain M31-XX-F00		4.61 (117)	4.80 (122)	1.90 (48)	13.14 (333.7)	15.04 (382)	2.40 (61)
Metal Bowl M31-XX-M00		4.61 (117)	4.80 (122)	1.90 (48)	13.10 (332.7)	15.00 (381)	2.40 (61)

Specifications

Flow Capacity*	3/4	215 SCFM (101.4 dm ³ /s)
	1	277 SCFM (130.8 dm ³ /s)
Maximum Supply Pressure	Plastic Bowl	150 PSIG (10.3 bar)
	Metal Bowl	200 PSIG (13.8 bar)
Operating Temperature	Plastic Bowl	32° to 125°F (0° to 52°C)
	Metal Bowl	32° to 150°F (0° to 65.5°C)
Port Size	NPT / BSPP-G	3/4, 1
Standard Filtration	Micron	(B) 0.5, (C) 0.01 (D) 0.003 mg/m ³ **
Weight		6.76 lb. (3.1 kg)

* Inlet pressure 150 PSIG (10.3 bar). Pressure drop of 3 PSID (0.2 bar).

** Filtration temperature of 70°F (21°C) @100 PSIG (6.9 bar) with typical compressor lubricating oil and protected by Type "C" filter.

"M" Series Coalescing Filters, with Type "B" 0.5 micron elements: All Wilkerson Type "M" Oil Removal (Coalescing) Filters with Type "B" 0.5 micron elements **exceed ISO Class 2** for maximum particle size and concentration of solid contaminants, and exceed Class 3 on maximum oil content (mg/m³).

"M" Series Coalescing Filters, with Type "C" 0.01 micron elements: All Wilkerson Type "M" Oil Removal (Coalescing) Filters with Type "C" 0.01 micron elements **exceed ISO Class 1** for maximum particle size and concentration of solid contaminants, and exceed Class 1 on maximum oil content (mg/m³).

"M" Series Adsorption Filters, with Type "D" 0.003 micron activated carbon elements: All Wilkerson Type "M" adsorption filters with Type "D" 0.003 micron activated carbon elements **exceed ISO Class 1** on maximum oil content (mg/m³).

Materials of Construction

Body		Zinc
Bowls	Plastic Bowl	Polycarbonate
	Metal Bowl	Aluminum
Element Holder		Brass Stud
Filter Elements	Type "B", "C"	Borosilicate Cloth
	Type "D"	Activated Carbon
Seals		Fluorocarbon

= "Most Popular"

Replacement Bowl Kits

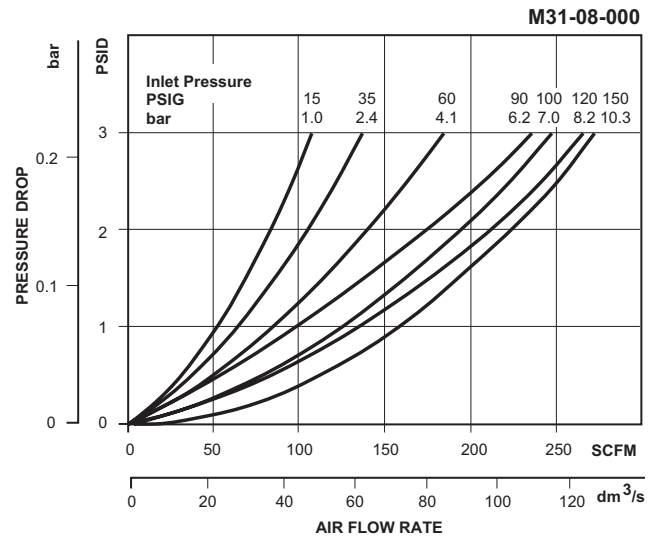
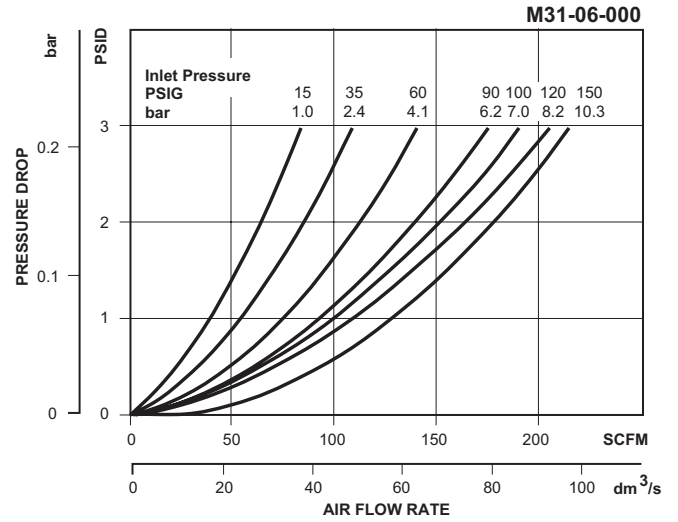
- Metal Bowl –
- Manual Drain MRP-95-939
- Plastic Bowl –
- Bowl Guard, Manual Drain MRP-95-938
- Bowl Guard, Auto Drain..... MRP-95-941
- Manual Drain MRP-95-940

Replacement Element Kits

- Type "B", 0.5 Micron..... MSP-95-993
- Type "C", 0.01 Micron..... MTP-95-521
- Type "D", Oil Vapor Removing..... MXP-95-522

Accessories

- Automatic Mechanical Drain..... GRP-95-973
- Cap, Differential Pressure Indicator –
- For pressures over 150 PSIG..... GRP-95-020
- Differential Pressure Indicator DP2-01-000
- Manual Flex-Tip..... FRP-95-610
- Wall Mounting Bracket, L-Type GPA-95-734



Ordering Information

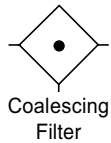
Model Type	Port Size	Polycarbonate Bowl / Bowl Guard / "C" Element	Metal Bowl / "C" Element	Polycarbonate Bowl / Bowl Guard / "B" Element	Polycarbonate Bowl / Bowl Guard / "D" Element (No DPI)
Manual Drain	3/4	M31-06-000	M31-06-M00	M31-06-S00	M31-06-X00
	1	M31-08-000	M31-08-M00	M31-08-S00	M31-08-X00
Automatic Drain	3/4	M31-06-F00	M31-06-FM0	M31-06-FS0	—
	1	M31-08-F00	M31-08-FM0	M31-08-FS0	—

Options - To order an option supplied with the unit model, add the appropriate coded suffix letter in the designated position of the model number.

Coalescing Filter

M32

= "Most Popular"



M32-08-000

Features

- Heavy-duty Cast Aluminum Housings to Withstand Operating Pressures Up to 300 PSIG †
- Differential Pressure Indicator to Eliminate the Guesswork of Element Replacement
- Manual Drain
- High-flow Filter Elements: Coalescing, 1 Micron and 0.01 Micron

Specifications

Flow Capacity*	1 1-1/4	419 SCFM (197 dm ³ /s) 741 SCFM (350 dm ³ /s)
Maximum Supply Pressure	without DP2 with DP2	300 PSIG (20.7 bar)† 150 PSIG (10.3 bar)
Operating Temperature	32° to 150°F (° to 65.5°C)	
Port Size	NPT / BSPP-G	1, 1-1/4
Standard Filtration	Micron	(B1) 1.0, (C) 0.01 (D) 0.003 mg/m ³ **
Weight	13 lb. (5.9 kg)	

* Inlet pressure 150 PSIG (10.3 bar). Pressure drop of 3 PSID (0.2 bar).

** Filtration temperature of 70°F (21°C) @100 PSIG (6.9 bar) with typical compressor lubricating oil and protected by Type "C" filter.

† Without Differential Pressure Indicator – Max. supply pressure is 300 PSIG (20.7 bar).

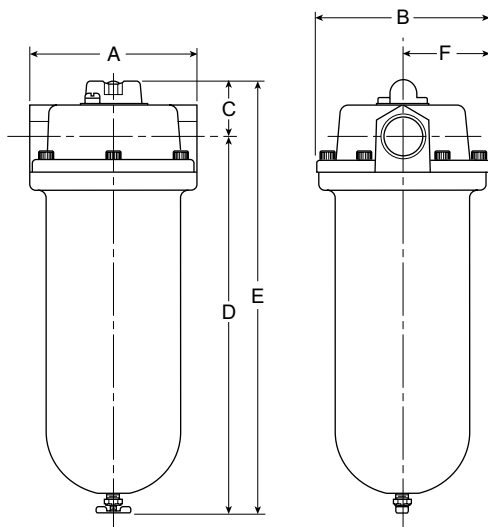
"M" Series Coalescing Filters, with Type "B1" 1.0 micron elements: All Wilkerson Type "M" Oil Removal (Coalescing) Filters with Type "B1" 1.0 micron elements **exceed ISO Class 2** for maximum particle size and concentration of solid contaminants, and exceed Class 3 on maximum oil content (mg/m³).

"M" Series Coalescing Filters, with Type "C" 0.01 micron elements: All Wilkerson Type "M" Oil Removal (Coalescing) Filters with Type "C" 0.01 micron elements **exceed ISO Class 1** for maximum particle size and concentration of solid contaminants, and exceed Class 1 on maximum oil content (mg/m³).

"M" Series Adsorption Filters, with Type "D" 0.003 micron activated carbon elements: All Wilkerson Type "M" adsorption filters with Type "D" 0.003 micron activated carbon elements **exceed ISO Class 1** on maximum oil content (mg/m³).

Materials of Construction

Body	Aluminum	
Bowls	Aluminum	
Element Retainer	Brass Nut / Steel Stud	
Filter Elements	Type "B1", "C" Type "D"	Borosilicate Cloth Activated Carbon
Seals	Fluorocarbon	



Dimensions

Models	Inches (mm)	A	B	C	D	E	F
Standard Unit M32-XX-000		6.20 (157)	6.40 (163)	2.10 (53)	13.90 (353)	16.00 (406)	3.20 (81.3)
Automatic Drain M32-XX-F00		6.20 (157)	6.40 (163)	2.10 (53)	14.04 (356.6)	16.14 (410)	3.20 (81.3)

= "Most Popular"

Replacement Bowl Kit

Gasket, Bowl, Fluorocarbon (1 per Kit) GRP-95-288

Replacement Element Kits

Type "B1", 1.0 Micron MSP-95-873

Type "C", 0.01 Micron MTP-95-559

Type "D", Oil Vapor Removing MXP-95-558

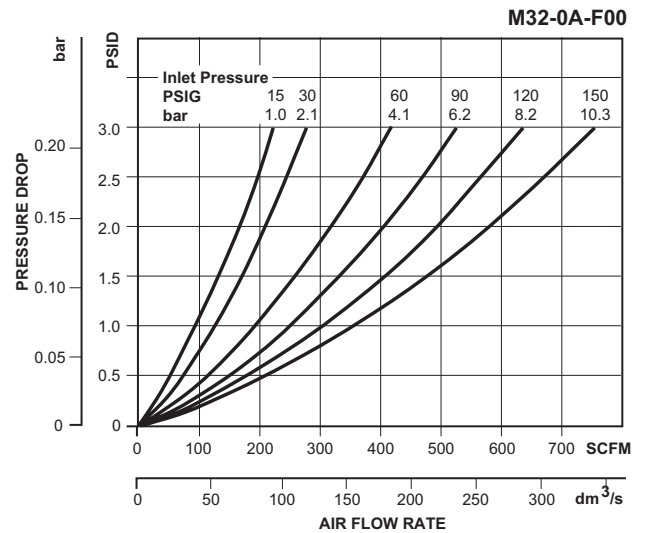
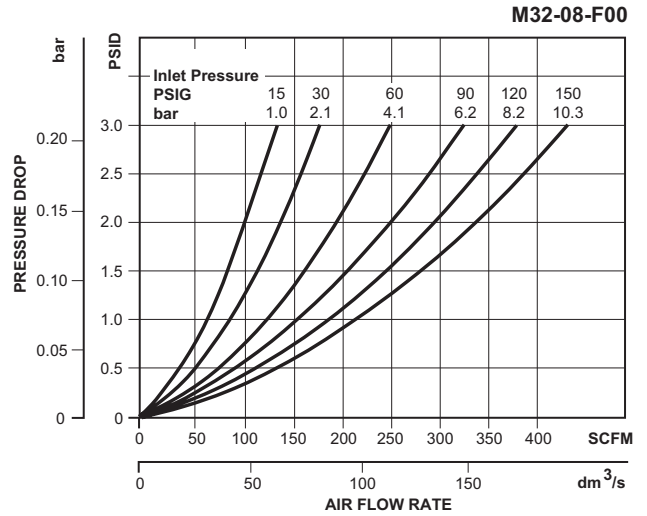
Accessories

Automatic Mechanical Drain GRP-95-981

Cap, Differential Pressure Indicator –
For pressures over 150 PSIG, 10,3 bar GRP-95-020

Gauge, Differential Pressure DP3-01-000

Indicator, Differential Pressure DP2-01-000



Ordering Information

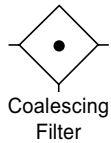
Model Type	Port Size	Metal Bowl / "C" Element	Metal Bowl / "B1" Element	Metal Bowl / "D" Element (No DPI)
Manual Drain	1	M32-08-000	M32-08-S00	M32-08-X00
	1-1/4	M32-0A-000	M32-0A-S00	M32-0A-X00
Automatic Drain	1	M32-08-F00	M32-08-FS0	—
	1-1/4	M32-0A-F00	M32-0A-FS0	—

Options - To order an option supplied with the unit model, add the appropriate coded suffix letter in the designated position of the model number

Coalescing Filter

M35

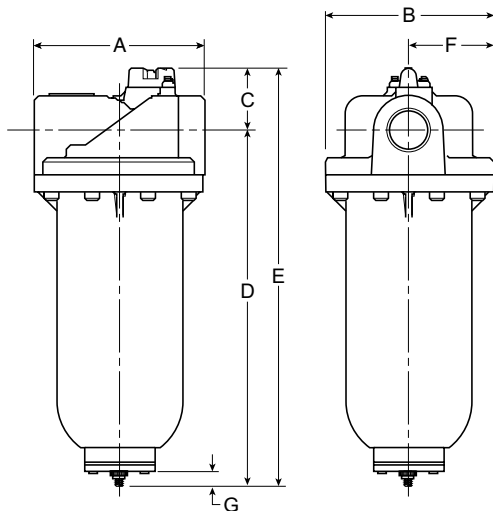
= "Most Popular"



M35-0B-000

Features

- Heavy-duty Cast Aluminum Housings to Withstand Operating Pressures Up to 300 PSIG †
- Differential Pressure Indicator to Eliminate the Guesswork of Element Replacement
- Unique Drain Mounting Plate Design Offers Trouble-free Method for Interchanging and Installing External Drains
- High-flow Filter Elements: Coalescing, 1 Micron and 0.01 Micron



Dimensions

Models	Inches (mm)	A	B	C	D	E	F	G
Standard Unit M35-XX-F00		7.80 (198)	7.75 (197)	2.83 (72)	16.24 (412)	19.07 (484)	3.88 (99)	.55 (14)
Without Automatic Drain M35-XX-000		7.80 (198)	7.75 (197)	2.83 (72)	15.69 (398.5)	18.52 (470)	3.88 (99)	.55 (14)

Specifications

Flow Capacity*	1-1/2	710 SCFM (335 dm ³ /s)
	2	710 SCFM (335 dm ³ /s)
Maximum Supply Pressure	without DP2	300 PSIG (20.7 bar)†
	with DP2	150 PSIG (10.3 bar)
Operating Temperature	32° to 150°F (0° to 65.5°C)	
Port Size	NPT / BSPP-G	1-1/2, 2
Standard Filtration	Micron	(B1) 1.0, (C) 0.01 (D) 0.003 mg/m ³ **
Weight	19.3 lb. (8.7 kg)	

* Inlet pressure 150 PSIG (10.3 bar). Pressure drop of 3 PSID (0.2 bar).

** Filtration temperature of 70°F (21°C) @100 PSIG (6.9 bar) with typical compressor lubricating oil and protected by Type "C" filter.

† Without Differential Pressure Indicator – Max. supply pressure is 300 PSIG (20.7 bar).

"M" Series Coalescing Filters, with Type "B1" 1.0 micron elements: All Wilkerson Type "M" Oil Removal (Coalescing) Filters with Type "B1" 1.0 micron elements **exceed ISO Class 2** for maximum particle size and concentration of solid contaminants, and exceed Class 3 on maximum oil content (mg/m³).

"M" Series Coalescing Filters, with Type "C" 0.01 micron elements: All Wilkerson Type "M" Oil Removal (Coalescing) Filters with Type "C" 0.01 micron elements **exceed ISO Class 1** for maximum particle size and concentration of solid contaminants, and exceed Class 1 on maximum oil content (mg/m³).

"M" Series Adsorption Filters, with Type "D" 0.003 micron activated carbon elements: All Wilkerson Type "M" adsorption filters with Type "D" 0.003 micron activated carbon elements **exceed ISO Class 1** on maximum oil content (mg/m³).

Materials of Construction

Body	Aluminum	
Bowls	Aluminum	
Filter Elements	Type "B1", "C" Type "D"	Borosilicate Cloth Activated Carbon
Seals	Fluorocarbon	
Stud	Plated Steel	

NOTE: Automatic internal float drain shown is included on M35 filters with F00 suffix only. Models with 000 suffix include drain plate with tapped 1/2 NPT / BSPP-G drain port.

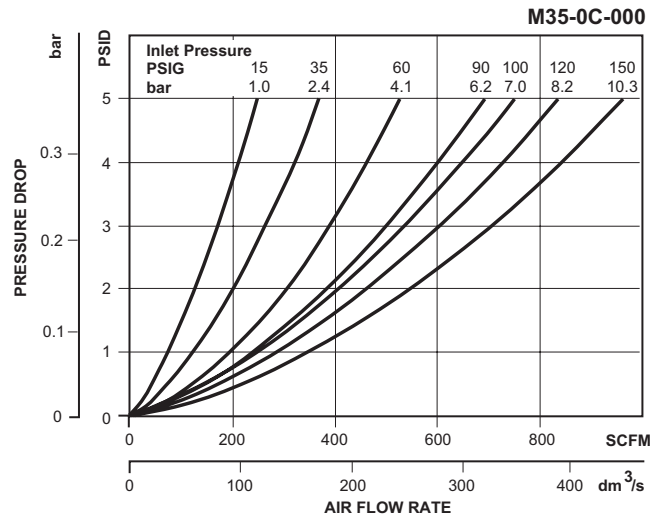
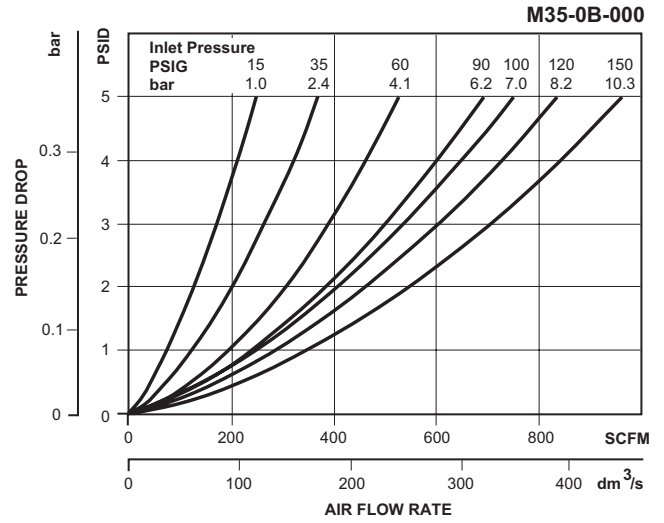
= "Most Popular"

Replacement Element Kits

- Type "B1", 1.0 Micron MSP-95-502
- Type "C", 0.01 Micron..... MTP-95-502
- Type "D", Oil Vapor Removing MXP-95-502

Accessories

- Cap, Differential Pressure Indicator –
(For pressures over 150 PSIG) GRP-95-022
- Drain, Automatic, Internal, Fluorocarbon..... GRP-95-981
- Drain Plate Kit –
.56 Dia. (Use with Internal Auto Float Drain)..... GRP-95-391
1/4 NPT Tapped Drain Port..... GRP-95-392
1/2 NPT Tapped Drain Port..... GRP-95-393
- Gauge, Differential Pressure DP3-01-000
- Indicator, Differential Pressure DP2-01-001



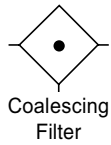
Ordering Information

Model Type	Port Size	Metal Bowl / "C" Element	Metal Bowl / "B1" Element	Metal Bowl / "D" Element
Manual Drain	1-1/2	M35-0B-000	M35-0B-S00	M35-0B-X00 (Includes 1/2 NPT / BSPP-G M35-0C-X00 Drain Plate)
	2	M35-0C-000	M35-0C-S00	
Automatic Drain	1-1/2	M35-0B-F00	M35-0B-FS0	—
	2	M35-0C-F00	M35-0C-FS0	—

Options - To order an option supplied with the unit model, add the appropriate coded suffix letter in the designated position of the model number.

Coalescing Filter

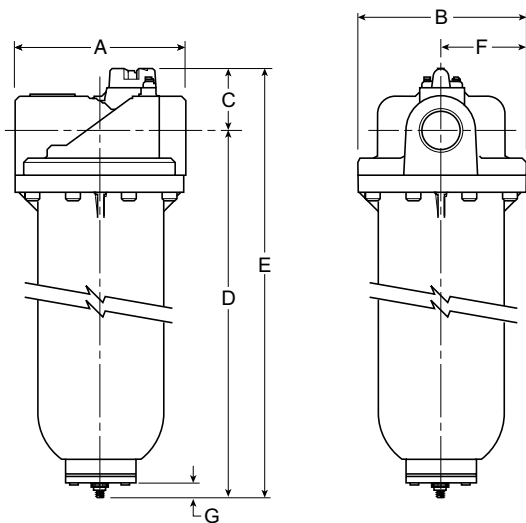
M36



M36-0C-000

Features

- Heavy-duty Cast Aluminum Housings to Withstand Operating Pressures Up to 300 PSIG †
- Differential Pressure Indicator to Eliminate the Guesswork of Element Replacement
- Unique Drain Mounting Plate Design Offers Trouble-free Method for Interchanging and Installing External Drains
- High-flow Filter Elements: Coalescing, 1 Micron and 0.01 Micron



Dimensions

Models	Inches (mm)	A	B	C	D	E	F	G
Standard Unit M36-0C-000		7.80 (198)	7.75 (197)	2.83 (72)	19.51 (495.5)	22.34 (567)	3.88 (99)	.55 (14)

= "Most Popular"

Specifications

Flow Capacity*	2	950 SCFM (450 dm ³ /s)
Maximum Supply Pressure	without DP2 with DP2	300 PSIG (20.7 bar)† 150 PSIG (10.3 bar)
Operating Temperature	32° to 150°F (0° to 65.5°C)	
Port Size	NPT / BSPP-G 2	
Standard Filtration	Micron	(B1) 1.0, (C) 0.01 (D) 0.003 mg/m ³ **
Weight	23.2 lb. (10.1 kg)	

* Inlet pressure 150 PSIG (10.3 bar). Pressure drop of 3 PSID (0.2 bar).

** Filtration temperature of 70°F (21°C) @100 PSIG (6.9 bar) with typical compressor lubricating oil and protected by Type "C" filter.

† Without Differential Pressure Indicator – Max. supply pressure is 300 PSIG (20.7 bar).

"M" Series Coalescing Filters, with Type "B1" 1.0 micron elements: All Wilkerson Type "M" Oil Removal (Coalescing) Filters with Type "B1" 1.0 micron elements **exceed ISO Class 2** for maximum particle size and concentration of solid contaminants, and exceed Class 3 on maximum oil content (mg/m³).

"M" Series Coalescing Filters, with Type "C" 0.01 micron elements: All Wilkerson Type "M" Oil Removal (Coalescing) Filters with Type "C" 0.01 micron elements **exceed ISO Class 1** for maximum particle size and concentration of solid contaminants, and exceed Class 1 on maximum oil content (mg/m³).

"M" Series Adsorption Filters, with Type "D" 0.003 micron activated carbon elements: All Wilkerson Type "M" adsorption filters with Type "D" 0.003 micron activated carbon elements **exceed ISO Class 1** on maximum oil content (mg/m³).

Materials of Construction

Body	Aluminum	
Bowls	Aluminum	
Stud	Plated Steel	
Filter Elements	Type "B1", "C" Type "D"	Borosilicate Cloth Activated Carbon
Seals	Fluorocarbon	

NOTE: Standard filter includes tapped 1/2 NPT / BSPP-G drain plate. To order internal float drain shown, order drain adapter plate GRP-95-391 and automatic drain GRP-95-981.

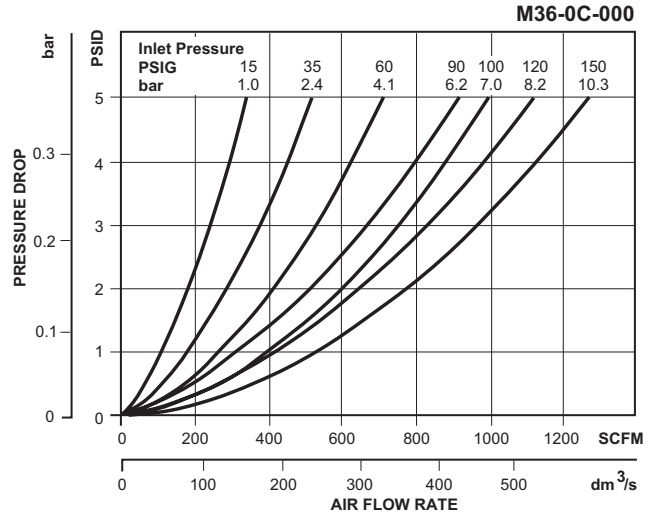
= "Most Popular"

Replacement Element Kits

- Type "B1", 1.0 Micron MSP-95-503
- Type "C", 0.01 Micron..... MTP-95-503
- Type "D", Oil Vapor Removing MXP-95-503

Accessories

- Cap, Differential Pressure Indicator
(For pressures over 150 PSIG) GRP-95-022
- Drain, Automatic, Internal, Fluorocarbon..... GRP-95-981
- Drain Plate Kit –
 - .56 Dia. (Use with Internal Auto Float Drain)..... GRP-95-391
 - 1/4 NPT Tapped Drain Port..... GRP-95-392
 - 1/2 NPT Tapped Drain Port..... GRP-95-393
- Gauge, Differential Pressure DP3-01-000
- Indicator, Differential Pressure DP2-01-001



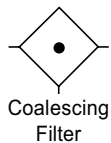
Ordering Information

Model Type	Port Size	Metal Bowl / "C" Element	Metal Bowl / "B1" Element	Metal Bowl / "D" Element
M36	2	M36-0C-000	M36-0C-S00	M36-0C-X00 (Includes 1/2 NPT / BSPP-G Drain Plate)

Options - To order an option supplied with the unit model, add the appropriate coded suffix letter in the designated position of the model number.

Coalescing Filter

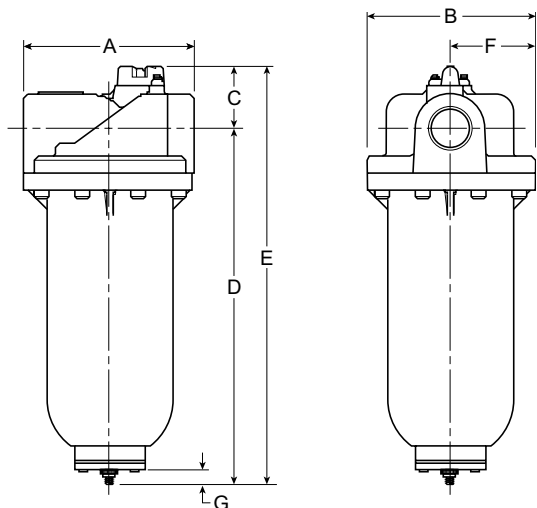
M43



M43-0E-000

Features

- Heavy-duty Cast Aluminum Housings to Withstand Operating Pressures Up to 300 PSIG †
- Differential Pressure Indicator to Eliminate the Guesswork of Element Replacement
- Unique Drain Mounting Plate Design Offers Trouble-free Method for Interchanging and Installing External Drains
- High-flow Filter Elements: Coalescing, 1 Micron and 0.01 Micron



Dimensions

Models	Inches (mm)	A	B	C	D	E	F	G
Standard Unit M43-0E-000		8.94 (227)	8.88 (225.5)	3.48 (88)	25.96 (660)	29.44 (748)	4.44 (112.8)	.55 (14)

= "Most Popular"

Specifications

Flow Capacity*	3	1770 SCFM (800 dm ³ /s)
Maximum Supply Pressure	without DP2 with DP2	300 PSIG (20.7 bar)† 150 PSIG (10.3 bar)
Operating Temperature	32° to 150°F (0° to 65.5°C)	
Port Size	NPT / BSPP-G 3	
Standard Filtration	Micron	(B1) 1.0, (C) 0.01 (D) 0.003 mg/m ³ **
Weight	32.8 lb. (14.9 kg)	

* Inlet pressure 150 PSIG (10.3 bar). Pressure drop of 3 PSID (0.2 bar).

** Filtration temperature of 70°F (21°C) @100 PSIG (6.9 bar) with typical compressor lubricating oil and protected by Type "C" filter.

† Without Differential Pressure Indicator – Max. supply pressure is 300 PSIG (20.7 bar).

"M" Series Coalescing Filters, with Type "B1" 1.0 micron elements: All Wilkerson Type "M" Oil Removal (Coalescing) Filters with Type "B1" 1.0 micron elements **exceed ISO Class 2** for maximum particle size and concentration of solid contaminants, and exceed Class 3 on maximum oil content (mg/m³).

"M" Series Coalescing Filters, with Type "C" 0.01 micron elements: All Wilkerson Type "M" Oil Removal (Coalescing) Filters with Type "C" 0.01 micron elements **exceed ISO Class 1** for maximum particle size and concentration of solid contaminants, and exceed Class 1 on maximum oil content (mg/m³).

"M" Series Adsorption Filters, with Type "D" 0.003 micron activated carbon elements: All Wilkerson Type "M" adsorption filters with Type "D" 0.003 micron activated carbon elements **exceed ISO Class 1** on maximum oil content (mg/m³).

Materials of Construction

Body	Aluminum	
Bowls	Aluminum	
Filter Elements	Type "B1", "C" Type "D"	Borosilicate Cloth Activated Carbon
Seals	Fluorocarbon	
Stud	Plated Steel	

NOTE: Standard filter includes tapped 1/2 NPT / BSPP-G drain plate. To order internal float drain shown, order drain adapter plate GRP-95-391 and automatic drain GRP-95-981.

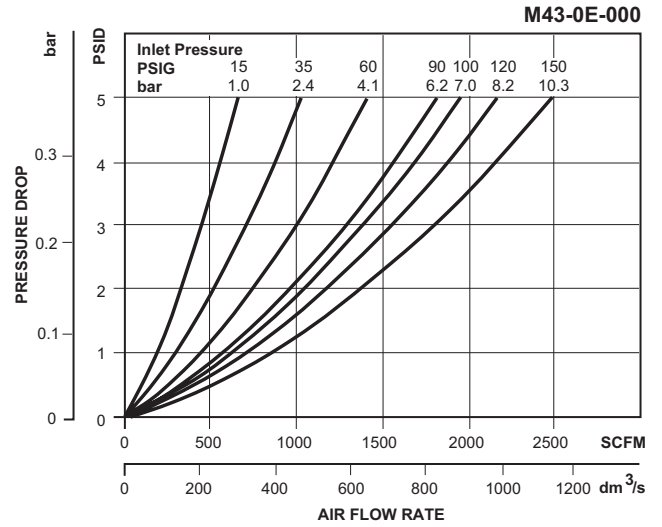
= "Most Popular"

Replacement Element Kits

- Type "B1", 1.0 Micron MSP-95-876
- Type "C", 0.01 Micron..... MTP-95-562
- Type "D", Oil Vapor Removing MXP-95-565

Accessories

- Cap, Differential Pressure Indicator
(For pressures over 150 PSIG) GRP-95-022
- Drain, Automatic, Internal, Fluorocarbon..... GRP-95-981
- Drain Plate Kit –
 - .56 Dia. (Use with Internal Auto Float Drain)..... GRP-95-391
 - 1/4 NPT Tapped Drain Port..... GRP-95-392
 - 1/2 NPT Tapped Drain Port..... GRP-95-393
- Gauge, Differential Pressure DP3-01-000
- Indicator, Differential Pressure DP2-01-001



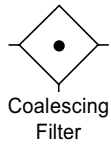
Ordering Information

Model Type	Port Size	Metal Bowl / "C" Element	Metal Bowl / "B1" Element	Metal Bowl / "D" Element
M43	3	M43-0E-000	M43-0E-S00	M43-0E-X00 (Includes 1/2 NPT / BSPP-G Drain Plate)

Options - To order an option supplied with the unit model, add the appropriate coded suffix letter in the designated position of the model number.

Coalescing Filter

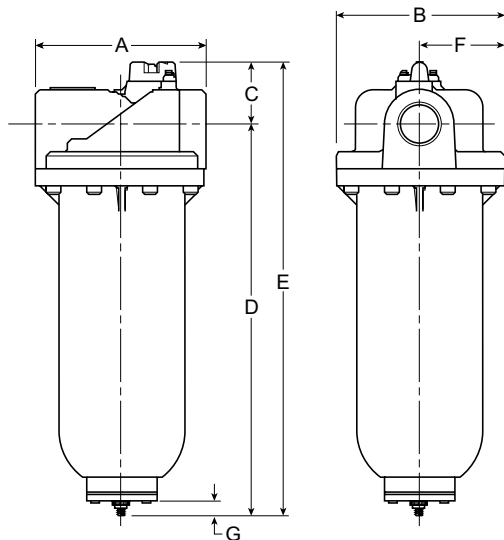
M45



M45-0E-000

Features

- Heavy-duty Cast Aluminum Housings to Withstand Operating Pressures Up to 300 PSIG †
- Differential Pressure Indicator to Eliminate the Guesswork of Element Replacement
- Unique Drain Mounting Plate Design Offers Trouble-free Method for Interchanging and Installing External Drains
- High-flow Filter Elements: Coalescing, 1 Micron and 0.01 Micron



Dimensions

Models	Inches (mm)	A	B	C	D	E	F	G
Standard Unit M45-XX-000		8.94 (227)	8.88 (225.5)	3.48 (88)	32.52 (826)	36.00 (914)	4.44 (112.8)	.55 (14)

= "Most Popular"

Specifications

Flow Capacity*	3	2200 SCFM (1000 dm ³ /s)
Maximum Supply Pressure	without DP2 with DP2	300 PSIG (20.7 bar)† 150 PSIG (10.3 bar)
Operating Temperature	32° to 150°F (0° to 65.5°C)	
Port Size	NPT / BSPP-G	3
Standard Filtration	Micron	(B1) 1.0, (C) 0.01 (D) 0.003 mg/m ³ **
Weight	39.0 lb. (17.7 kg)	

* Inlet pressure 150 PSIG (10.3 bar). Pressure drop of 3 PSID (0.2 bar).

** Filtration temperature of 70°F (21°C) @100 PSIG (6.9 bar) with typical compressor lubricating oil and protected by Type "C" filter.

† Without Differential Pressure Indicator – Max. supply pressure is 300 PSIG (20.7 bar).

"M" Series Coalescing Filters, with Type "B1" 1.0 micron elements: All Wilkerson Type "M" Oil Removal (Coalescing) Filters with Type "B1" 1.0 micron elements **exceed ISO Class 2** for maximum particle size and concentration of solid contaminants, and exceed Class 3 on maximum oil content (mg/m³).

"M" Series Coalescing Filters, with Type "C" 0.01 micron elements: All Wilkerson Type "M" Oil Removal (Coalescing) Filters with Type "C" 0.01 micron elements **exceed ISO Class 1** for maximum particle size and concentration of solid contaminants, and exceed Class 1 on maximum oil content (mg/m³).

"M" Series Adsorption Filters, with Type "D" 0.003 micron activated carbon elements: All Wilkerson Type "M" adsorption filters with Type "D" 0.003 micron activated carbon elements **exceed ISO Class 1** on maximum oil content (mg/m³).

Materials of Construction

Body	Aluminum	
Bowls	Aluminum	
Filter Elements	Type "B1", "C" Type "D"	Borosilicate Cloth Activated Carbon
Seals	Fluorocarbon	
Stud	Plated Steel	

NOTE: Standard filter includes tapped 1/2 NPT / BSPP-G drain plate. To order internal float drain shown, order drain adapter plate GRP-95-391 and automatic drain GRP-95-981.

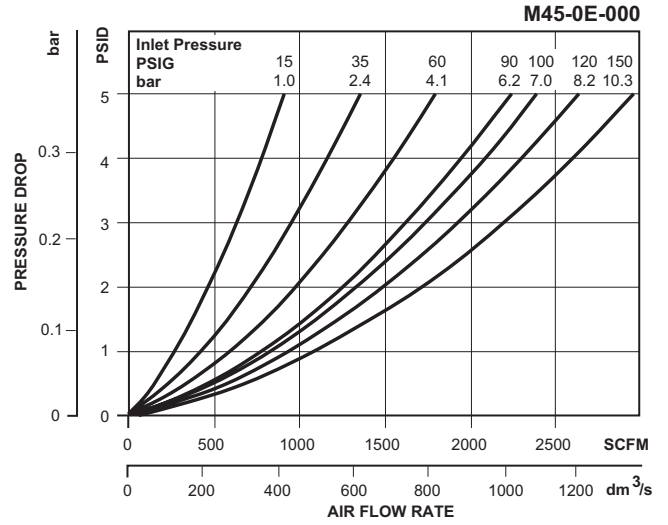
= "Most Popular"

Replacement Element Kits

- Type "B1", 1.0 Micron MSP-95-500
- Type "C", 0.01 Micron..... MTP-95-500
- Type "D", Oil Vapor Removing MXP-95-500

Accessories

- Cap, Differential Pressure Indicator
(For pressures over 150 PSIG) GRP-95-022
- Drain, Automatic, Internal, Fluorocarbon..... GRP-95-981
- Drain Plate Kit –
 - .56 Dia. (Use with Internal Auto Float Drain)..... GRP-95-391
 - 1/4 NPT Tapped Drain Port..... GRP-95-392
 - 1/2 NPT Tapped Drain Port..... GRP-95-393
- Gauge, Differential Pressure DP3-01-000
- Indicator, Differential Pressure DP2-01-001



B

Ordering Information

Model Type	Port Size	Metal Bowl / "C" Element	Metal Bowl / "B1" Element	Metal Bowl / "D" Element
M45	3	M45-0E-000	M45-0E-S00	M45-0E-X00 (Includes 1/2 NPT / BSPP-G Drain Plate)

Options - To order an option supplied with the unit model, add the appropriate coded suffix letter in the designated position of the model number.