



# CLEMCO

The Performance  
System

## TECHNICAL DATA SHEET

*Note: For safe, efficient blasting, read and follow the owner's manual and seek training for everyone who will use this equipment.*

### Purpose

The Clemco Climate Control Tube (CCT) allows the blast operator to cool or warm the incoming compressed air to a Clemco high-pressure Type CE continuous flow supplied-air respirator.

### Requirements for Operation

20 cfm at 90 to 100 psi of Grade D quality breathing air as defined by the Compressed Gas Association Commodity Specification: G-7.1 ([www.cganet.com](http://www.cganet.com))

Pressure requirements vary with hose length.

25 ft - 75 ft	90 psi
100 ft - 125 ft	95 psi
150 - 200 ft	100 psi

NOTE: Do not exceed 200 ft of respirator hose with this device.

### Description of Operation

The Climate Control Tube is placed between the breathing tube and the respirator hose. A lever on the valve lets the operator adjust the temperature of the air entering the respirator by as much as 25° to 30° F warmer or cooler than ambient air.

The Climate Control Tube cannot be closed completely, so the operator always has at least the minimum required volume of air for breathing and to maintain positive pressure inside the helmet.

The Climate Control Tube comes with a belt that adjusts to fit up to a 54-inch waist. The durable buckle can be fastened and unfastened with gloved hands.

A heat shield protects the operator from warm exhaust air (a byproduct of the

## Description

Belt-mounted, adjustable valve — cools or warms breathing air. For use with Clemco respirator models Apollo 60 HP and Apollo 20 HP. Allows operator to adjust flow and temperature of incoming air.

## Climate Control Tube (CCT)

Stock No. 04411



production of cool air).

### Advantages

- Helps increase productivity by keeping blast operator cool in hot weather and warm in cold weather
- Durable construction
- Lightweight comfort system maintains

NIOSH approval

### Certifications and Approvals

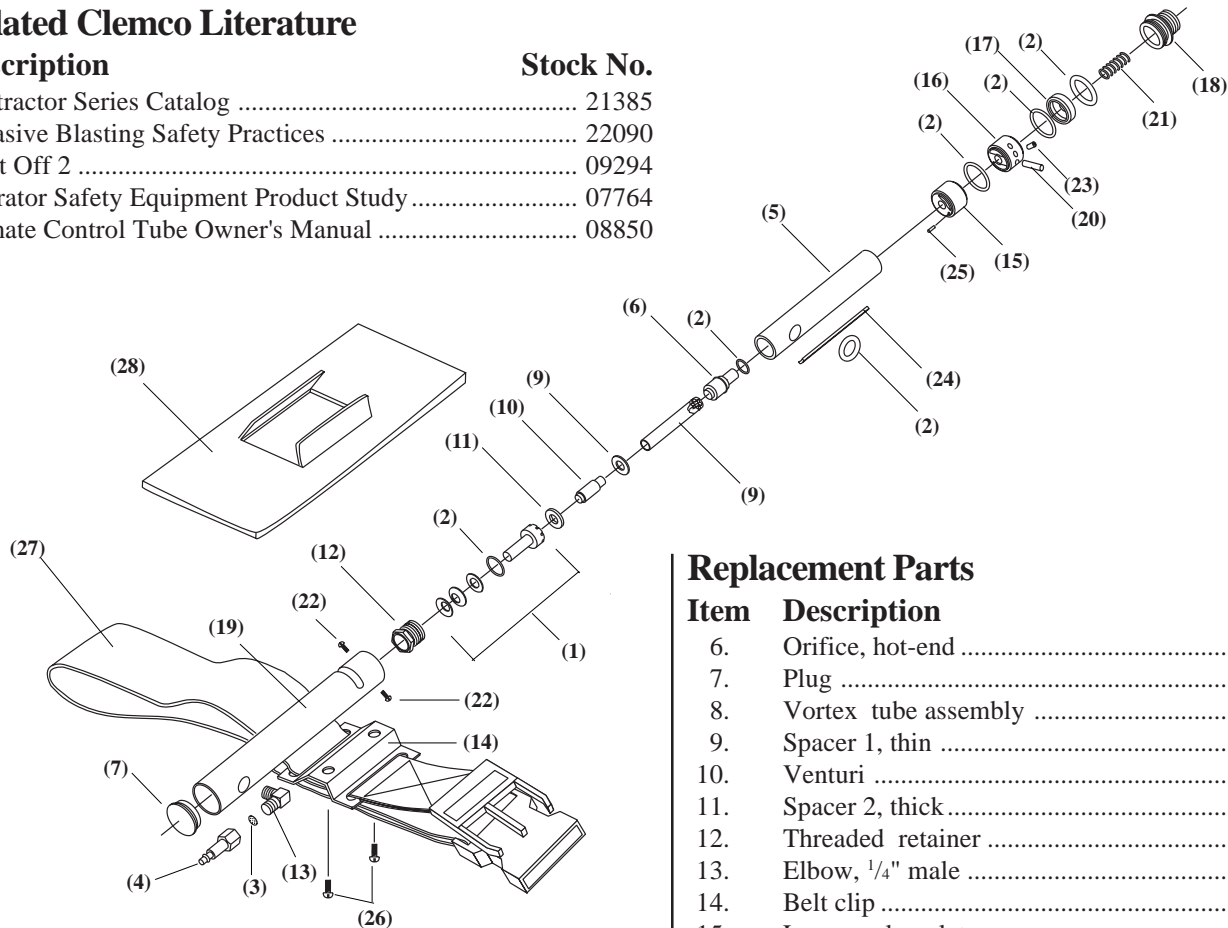
The Climate Control Tube is approved by NIOSH for use only with Clemco Apollo HP high-pressure Type CE supplied-air respirators (not for use with low-pressure respirators).

The Climate Control Tube is one component of a NIOSH-approved system; use of counterfeit parts voids the NIOSH approval.

To maintain NIOSH approval, use only genuine Clemco Apollo replacement parts.

Related Clemco Literature

Description	Stock No.
Contractor Series Catalog .....	21385
Abrasive Blasting Safety Practices .....	22090
Blast Off 2 .....	09294
Operator Safety Equipment Product Study .....	07764
Climate Control Tube Owner's Manual .....	08850



Options and Accessories

Description	Stock No.
Carbon monoxide alarm, CMS-2 .....	22894

Replacement Parts

Item	Description	Stock No.
(-)	Climate Control Tube, complete .....	04411
1.	Cool-end venturi assembly .....	08846
2.	Seal kit (includes all o-rings and seal) .....	08845
3.	Screen kit .....	08983
4.	Quick disconnect .....	08449
5.	Body .....	08825

Packaging - Ships in individual box

Dimensions	Shipping	Unit
Height:	10 1/2"	
Width (dia.):	4 3/4"	
Depth:	2 3/4"	
Weight:	2 lb	1.53 lb

Color

Red body with black shield

Replacement Parts

Item	Description	Stock No.
6.	Orifice, hot-end .....	08826
7.	Plug .....	08827
8.	Vortex tube assembly .....	23030
9.	Spacer 1, thin .....	08966
10.	Venturi .....	08967
11.	Spacer 2, thick .....	08968
12.	Threaded retainer .....	08829
13.	Elbow, 1/4" male .....	08869
14.	Belt clip .....	08974
15.	Lower valve plate .....	08830
16.	Upper valve plate .....	08831
17.	Support washer .....	08832
18.	Outlet fitting .....	08833
19.	Body housing .....	08834
20.	Control lever .....	08835
21.	Spring .....	08844
22.	Machine screw, 6-32 x 1/4" pan head .....	03870
23.	Set screw, 1/4" NC x 1/2" cup point .....	03072
24.	Spacer .....	08836
25.	Pin, valve plate .....	08838
26.	Machine screw, 10-24 x 1/2" round head .....	03886
27.	Belt .....	04430
28.	Heat shield .....	08981

NOTE: If items 1 and 2 are ordered together, you will receive an extra cool-end venturi o-ring.

Authorized Distributor: