

## Reciprocating Compressor Alternating Control Panel

### Standard Features

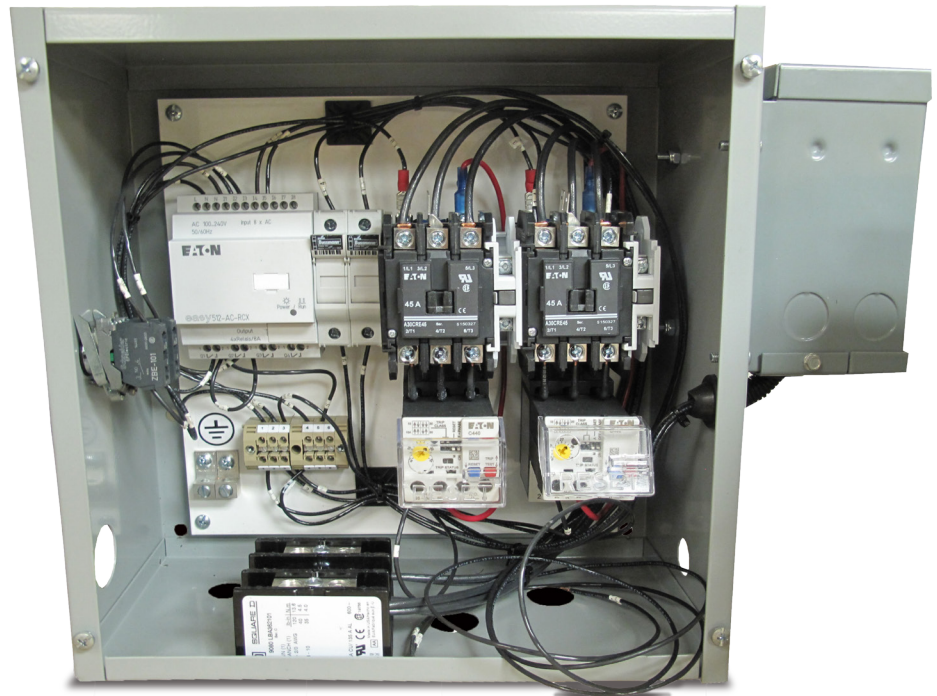
- 2-Motor contactors
- 1-Smart relay alternating control
- 2-Control voltage fuses
- Common main incoming power connection point
- 2-Grounding lugs
- UL Certification
- CSA Certification
- Adjustable motor overload settings
- Alternates from compressors A to B<sup>1</sup>
- Selector switch to run either A or B<sup>2</sup>
- Built in timer to prevent A or B running for extended periods<sup>3</sup>
- Start delay to prevent both units from starting at the same time<sup>4</sup>
- If compressor A or B fails the other compressor continues to operate the system
- Din rail mount contactors, fuse block, smart relay

### Options

- NEMA 4
- NEMA 4X
- NEMA 12
- 575 Volt
- 50HZ
- Modbus connection
- Ethernet port monitoring connection
- Remote re-set of overloads
- Control pressure switches

### Panel size ranges

- 208-230 Volt 3-15hp
- 208-230 Volt 20-30hp
- 460-480 Volt 3-25hp
- 460-480 Volt 25-50hp
- 575 Volt 3-20hp



### Feature Explanation

- 1 Control panel automatically alternates from compressor A to B
- 2 You can select to run just compressor A or compressor B
- 3 If compressor A runs for more than 5 minutes then panel turns compressor B on to help lower the duty cycle on compressor A (Same applies when compressor B is in lead)
- 4 Built in 10 second start delay to prevent both compressor from coming on at the same time



# Compressed Air Systems

Simplicity. It's What We Do.

[www.compressed-air-systems.com](http://www.compressed-air-systems.com)

