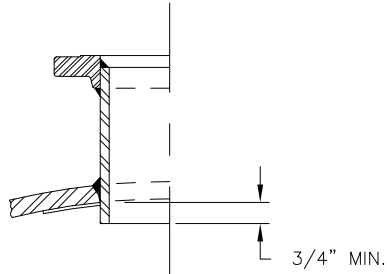
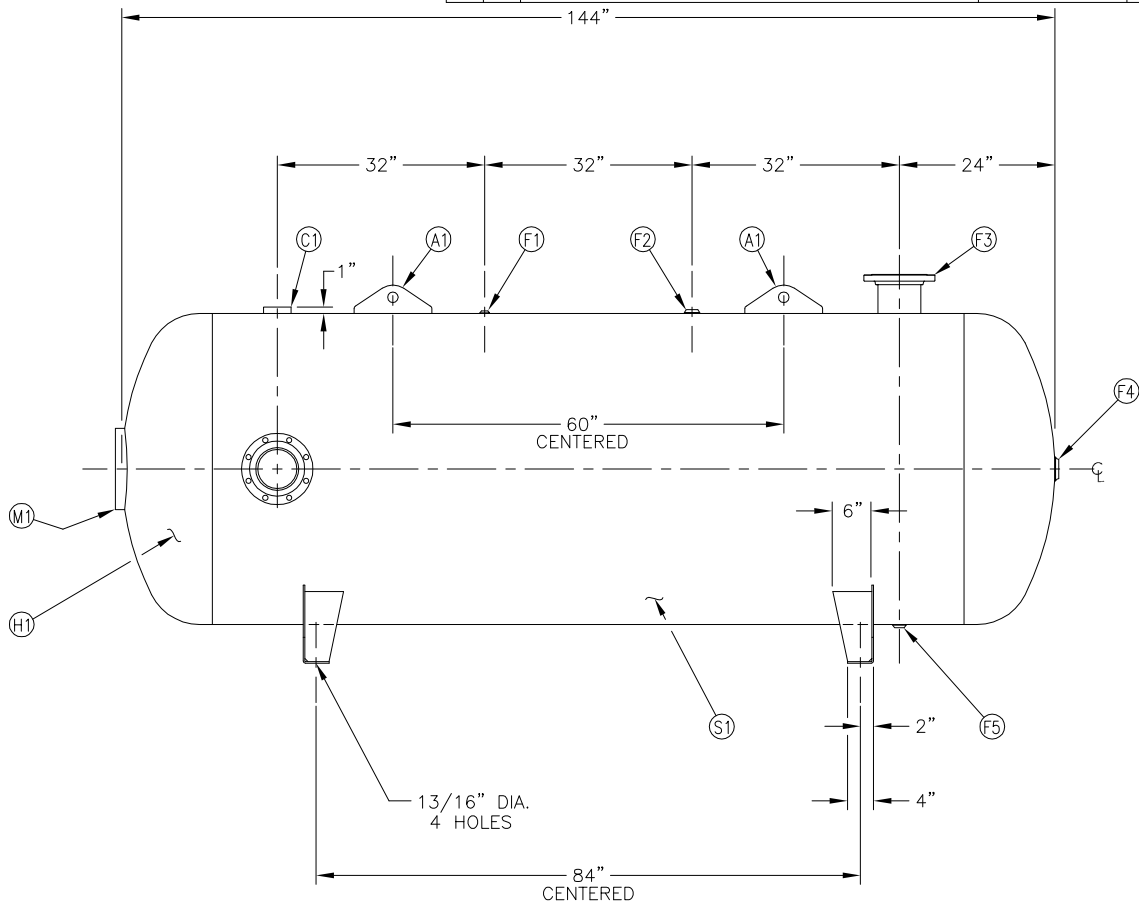
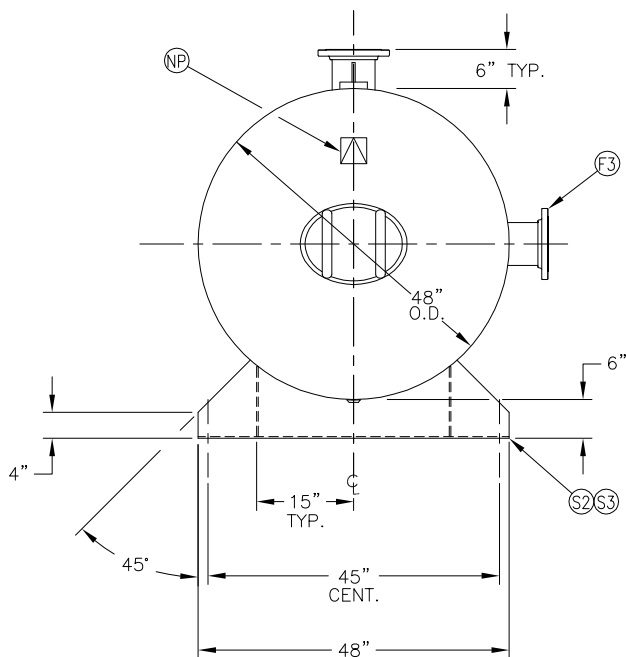


MANWAY DETAIL



6" NOZZLE DETAIL

NO.	QTY.	DESCRIPTION	SPEC	SUB-DWG.
S1	1			
H1	2			
C1	1	3"-NPT 3000# HALF COUPLING	SA-105	
F1	1	1/4"-NPT 1500# FLAT FLANGE	SA-181-70	
F2	1	1"-NPT 1500# RADIAL FLANGE	SA-181-70	
F3	2	6" 150# ANSI RF.SO. FLANGE	SA-105	
F3	2	6" SCH.80 PIPE X 7 1/2" LONG	SA-106-B	
F3	2	.134 X 8 5/8" O.D. X 6 5/8" I.D. BACKING RING	C1010/SA-36	
F4	1	2"-NPT 1500# FLAT FLANGE	SA-181-70	
F5	1	3/4"-NPT 1500# RADIAL FLANGE	SA-181-70	
M1	1	12" X 16" X 3/4" X 4" 300# MANWAY	SA-675-70/SA-106-C	
S2	2	1/4" X 15 11/16" X 48" SADDLE BRACKET	C1008	
S3	4	1/4" X 6" X 10 11/16" GUSSET	C1008	
A1	2	3/4" X 5" X 12" STANDARD LIFT LUG FOR HORIZ.		A84388
NP	1	ASME DATA PLATE	C1010	



SYM	DATE	BY	REVISION	APP	XREF	REV.	NOTES	SPECIFICATIONS		
							BREAK ALL EXPOSED INTERIOR NOZZLE EDGES ALL FLANGE BOLT HOLES TO STRADDLE VESSEL CENTERLINES	O.D. 48	LGTH. 144	
								MAMP 165	PSI @ 450 °F	
								SH.	MAT'L.	
								HD.	MAT'L.	
								GAL. 1060	S.A.	
								WT. 2200	CJ.FT.	
								CRN ---	CODE ASME SECT.VIII, DIV.1	
								WELD DETAILS: M-1932	PER DATE OF DWG/LAST REV	
								STD. TOLERANCES (UNLESS OTHERWISE NOTED): M-2461		
										Q:\3000
								<b>48" X 144"</b> <b>STANDARD AIR REC.</b>		
										SCALE: NONE
								DRAWN BY		DATE
								APP. BY		DATE
								DRAWING NO.		302493