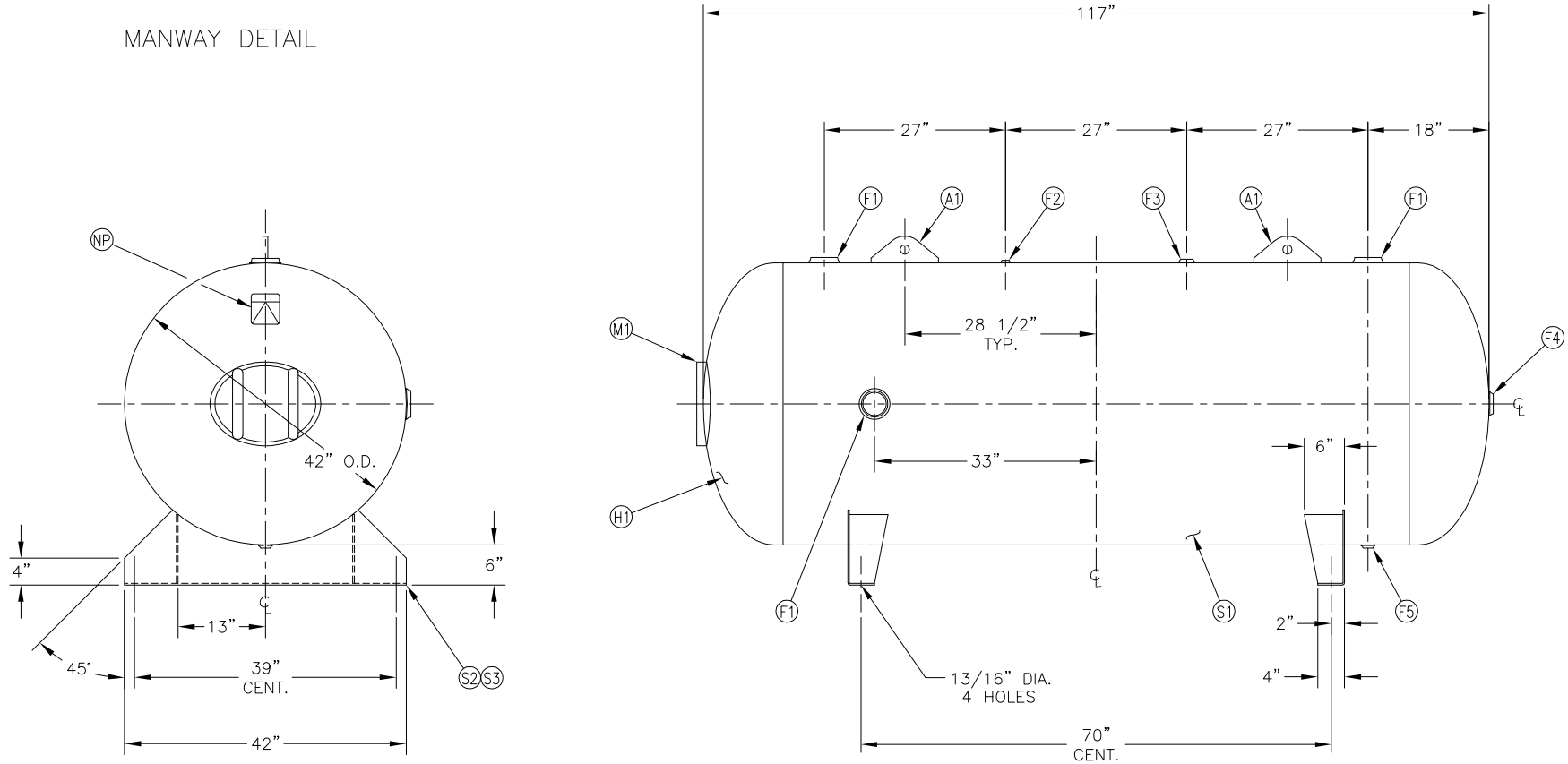



NO.	QTY.	DESCRIPTION	SPEC	SUB-DWG.
S1	1			
H1	2			
F1	3	3"-NPT 1500# RADIAL FLANGE	SA-181-70	
F2	1	1/4"-NPT 1500# FLAT FLANGE	SA-181-70	
F3	1	1"-NPT 1500# RADIAL FLANGE	SA-181-70	
F4	1	2"-NPT 1500# FLAT FLANGE	SA-181-70	
F5	1	3/4"-NPT 1500# RADIAL FLANGE	SA-181-70	
M1	1	12" X 16" X 3/4" X 4" 300# MANWAY	SA-675-70/SA-106-C	
S2	2	1/4" X 14 3/4" X 42" SADDLE BRACKET	C1008	
S3	4	1/4" X 6" X 10" GUSSET	C1008	
A1	2	1/2" X 4" X 10" STANDARD LIFT LUG FOR HORIZ.		A84540
NP	1	ASME DATA PLATE	C1010	



SYM	DATE	BY	REVISION	APP	XREF	REV.	NOTES	SPECIFICATIONS	 42" X 117" STANDARD AIR REC.			
								O.D. 42 LGTH. 117 MAWP 165 PSI @ 450 'F RT- MDMT -20 'F @ 165 PSI CRN N/A WELD DETAILS: M-1932 STD. TOLERANCES (UNLESS OTHERWISE NOTED): M-2461	SH. MAT'L. HD. MAT'L. GAL. 660 S.A. WT. 1375# CU.FT. CORR ALW — SH — HD CODE ASME SECT.VIII, DIV.1 PER DATE OF DWG/LAST REV	DRAWN BY	DATE	SCALE: NONE
									APP. BY		DRAWING NO.	302490